



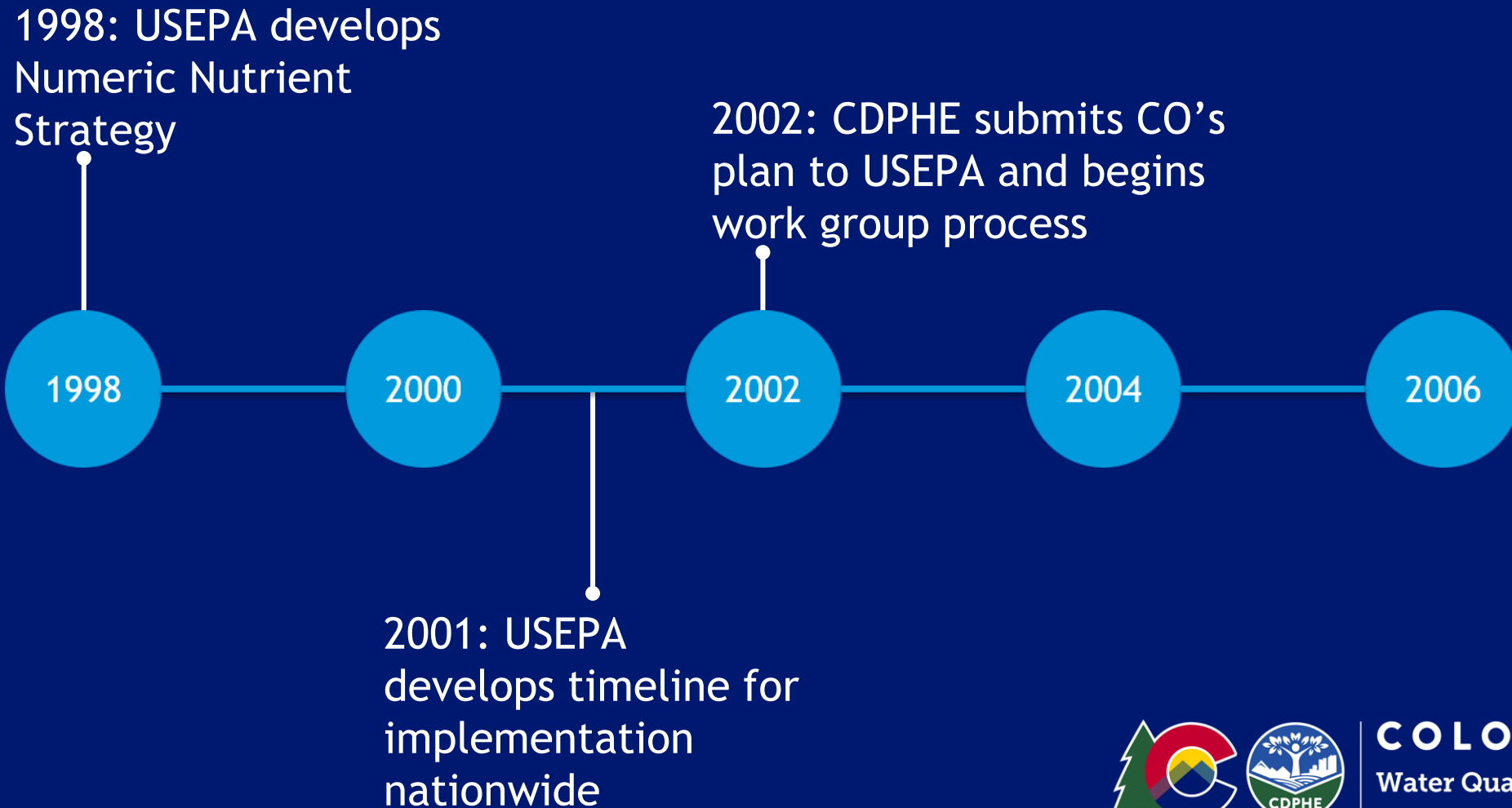
COLORADO

**Department of Public
Health & Environment**

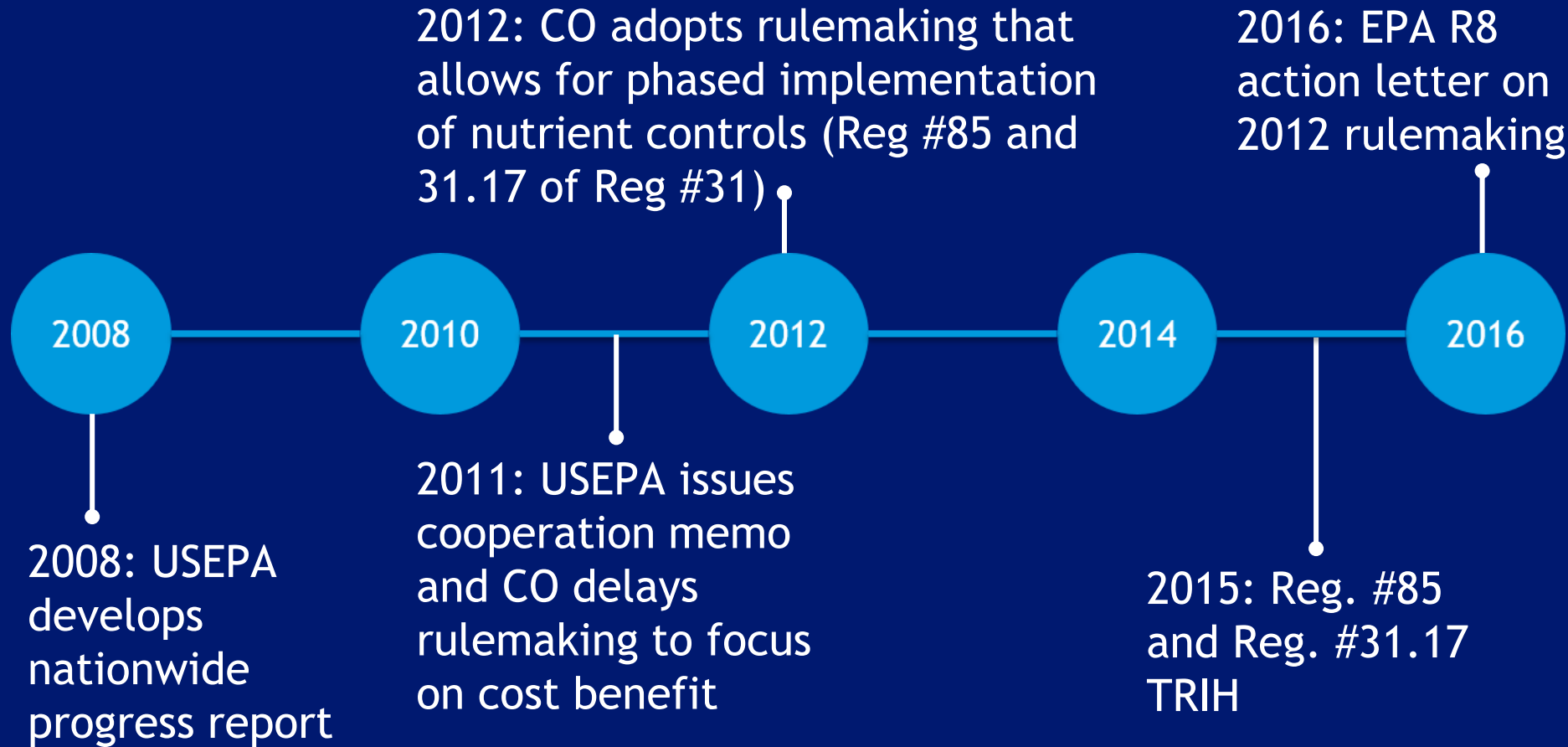
Approaches to Nutrients Permitting

2025 Clean Water Cross-Program Workshop

We have been working on this for a long time



We have been working on this for a long time (con't)



Current regulatory strategy

Nutrients Management Control Regulation

- Technology based treatment requirements
- Enhanced controls for stormwater dischargers
- Voluntary controls of nonpoint sources
- Monitoring requirements
- Voluntary Incentive Program

Traditional WQBEL Approach

- Focused on protection of classified uses
- Applied to streams and lakes above dischargers
- Applied to protect municipal water supplies



Regulation 85 Technological Limitations

Current facilities >2MGD

- 1 mg/L Total Phosphorus (annual median)
- 15 mg/L Total Inorganic Nitrogen (annual median)

New facilities

- 0.7 mg/L Total Phosphorus (annual median)
- 7 mg/L Total Inorganic Nitrogen (annual median)



Voluntary Incentive Program

- WQCC Policy 17-1 (flexibility)
- Compliance Schedule (CS) Incentive encourages facilities to reduce below Reg #85 limits before required
- Available to all facilities discharging to a surface water (size; DWWTW; industrial)
- Incentive designed to enhanced biological nutrient reduction
- Voluntary

