



Connecticut Department of Energy and Environmental Protection



Connecticut Department of
**ENERGY &
ENVIRONMENTAL
PROTECTION**

Integration of Environmental Justice Concerns into 303(d) and Other CWA Programs in Connecticut

Traci Iott, CTDEEP
ACWA Annual Meeting
August 10, 2023



Connecticut Department of Energy and Environmental Protection

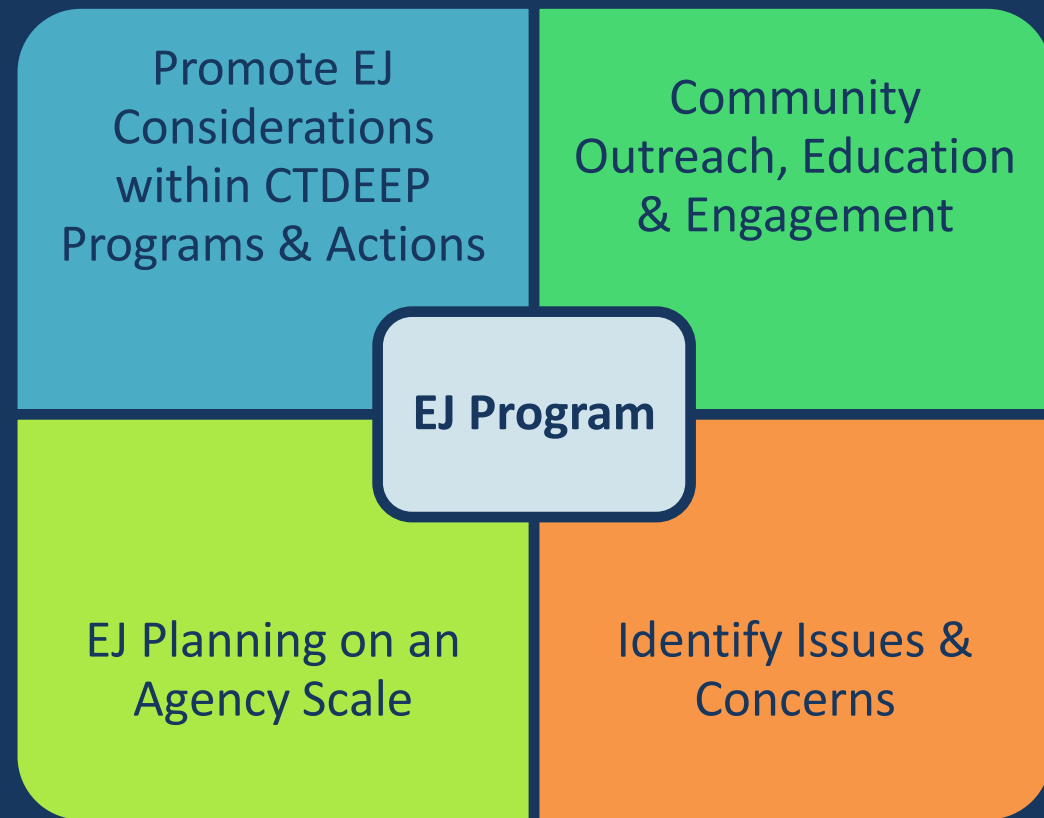
Presentation Topics

- Describe CTDEEP Environmental Equity Program and Policy
- Identify approaches used in 303(d) Program to consider Environmental Justice
- Identify approaches used in other Water Quality-based Programs to consider Environmental Justice



Environmental Equity Program & Policy

"...no segment of the population should, because of its racial or economic makeup, bear a disproportionate share of the risks and consequences of environmental pollution or be denied equal access to environmental benefits." *CTDEEP's Environmental Equity Policy, 1993*



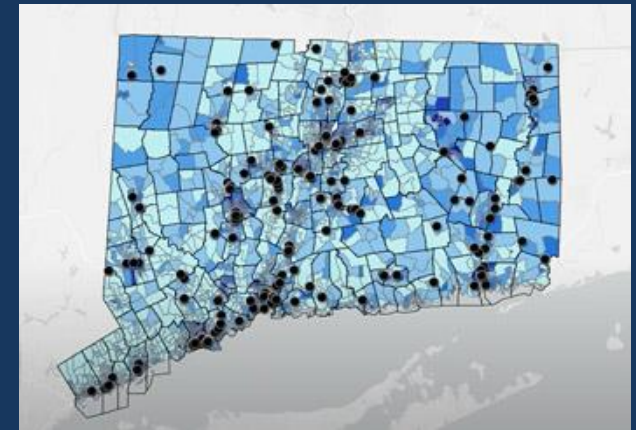
[CTDEEP Environmental Justice Program](#)




CTDEEP Environmental Justice Program

Opportunities to Engage

- CT Equity & Environmental Justice Advisory Council
- Report Environmental Concern
- Participate in Permitting/Policy Process
- CT EJ Community mapping
- Education & Outreach
- Linking Climate Change & EJ
- Environmental Grant Opportunities
- Health Information

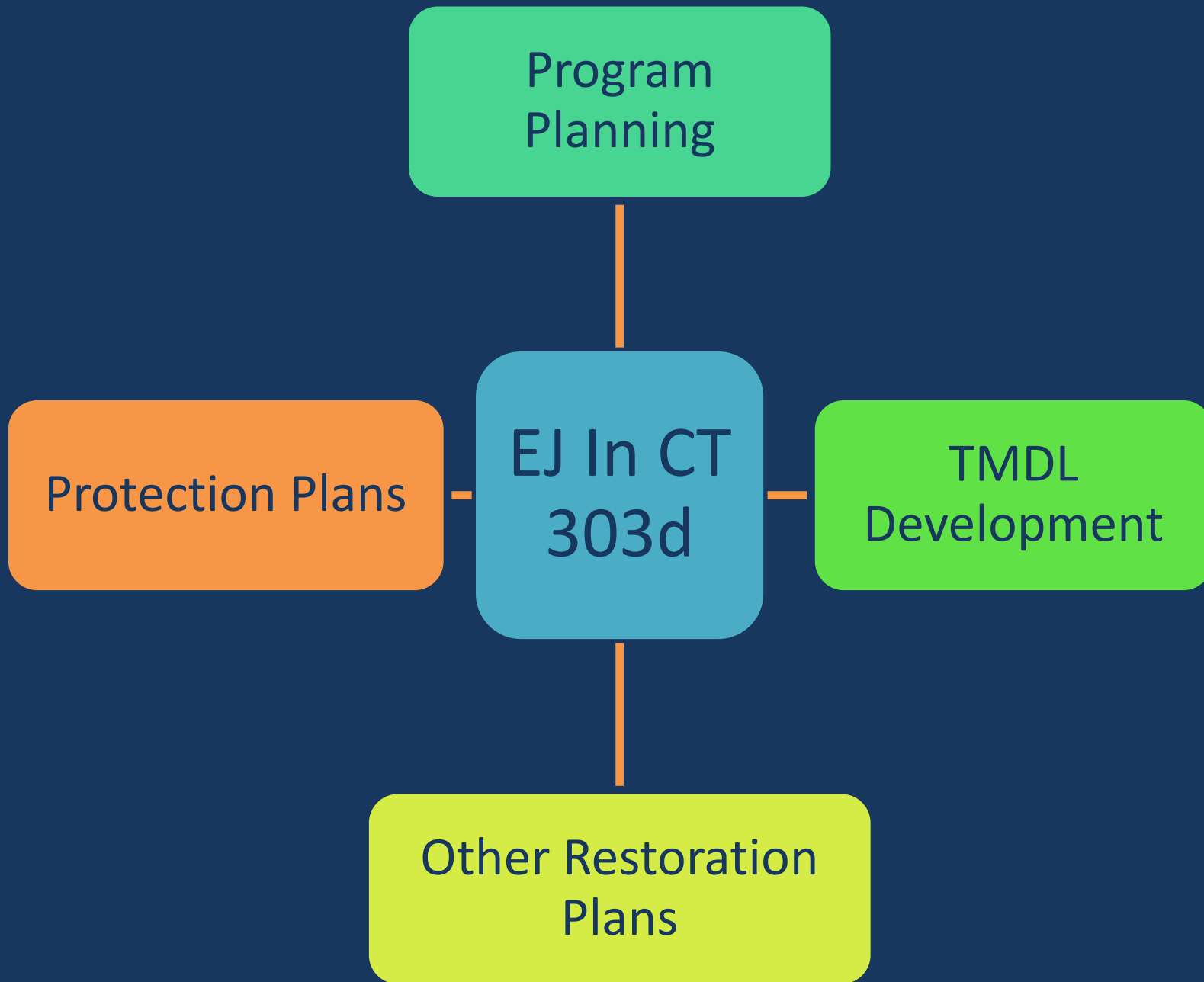




Environmental Justice: CTDEEP 303(d) Program



Connecticut Department of Energy and Environmental Protection



Program Planning

Enhanced process to identify where 303(d) water quality-based plans will be developed

- Extensive engagement within CTDEEP & with public & outside partners
- Integrated Water Planning & Management in CT (EPA 303(d) Program Vision)
- Includes Consideration of Environmental Justice



Considering EJ in TMDLs & Protection Plans

Develop maps for new TMDLs or Protection Plans to show

- water quality conditions
- Key community landmarks such as schools, parks and roads
- Areas of EJ Concern
 - Distressed Municipalities
 - Low Income Area Census Blocks
 - Tribal Areas

Include Recommendations to Prioritize Implementation to Restore or Protect Water Quality within EJ areas

TMDLs are “Action Plans” that evaluate water quality conditions and sources, to establish a plan to restore or protect water quality based on State’s Water Quality Standards



Environmental Justice

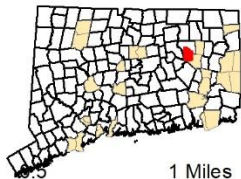
Sawmill Brook Subregional Basin

Legend

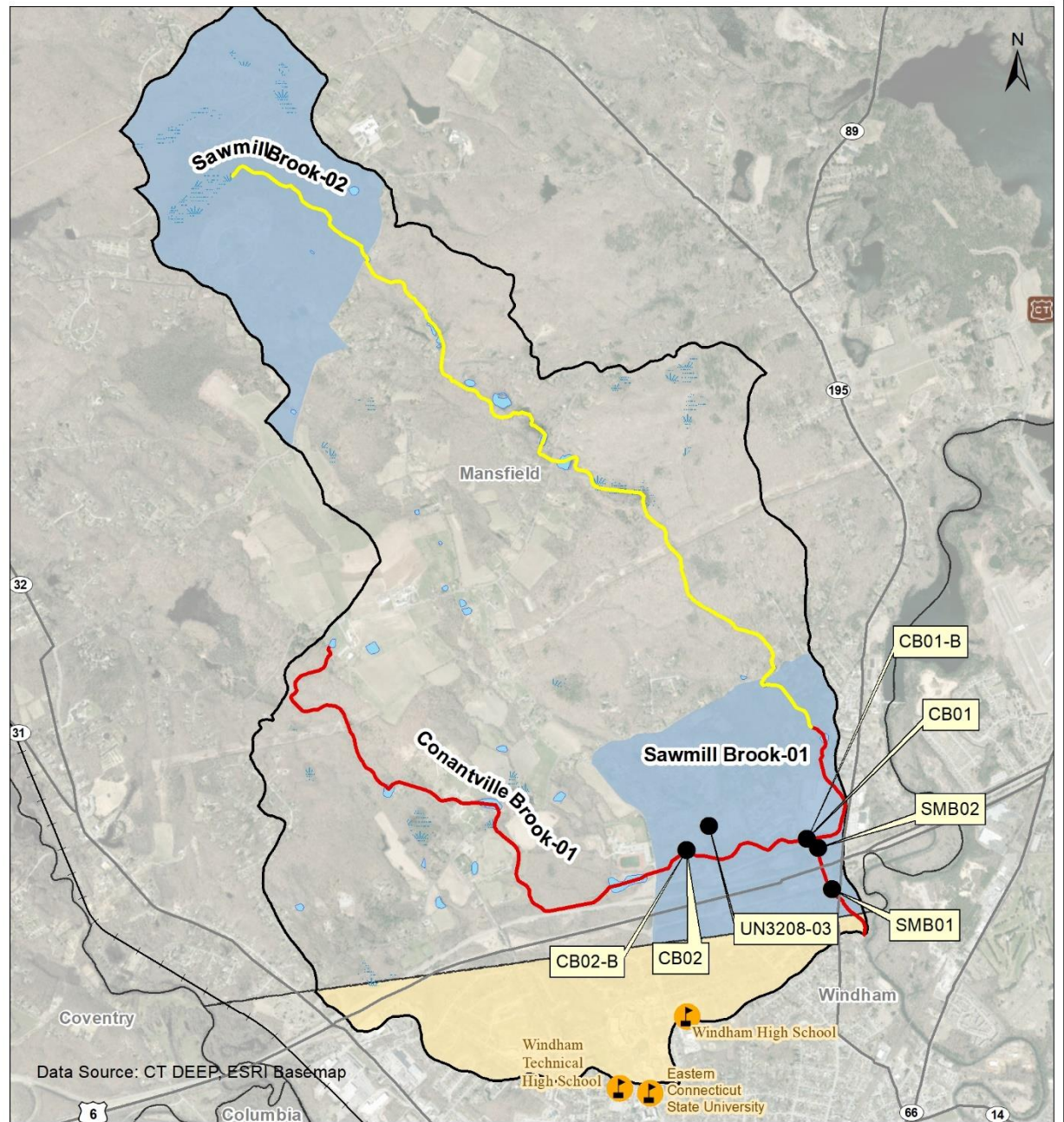
- Bacteria Monitoring Station
 - 🏫 School (3)
 - 🚗 State Park or Reserve Access (1)
 - 🚊 Railroad
 - 🛣 Interstate
 - 🛣 US Route
 - 🗺 Town Boundary
 - 🌿 Marsh
 - 💧 Waterbody
- CT 2020 Recreation Assessment Rivers**
- 🟡 Insufficient Information; Not Assessed
 - 🔴 Not Supporting
- Distressed Municipality**
- 🟡 Distressed Municipality (1)
 - 🟦 Low Income Areas by Census Block (2)



Created
2022



0 1 Miles



Data Source: CT DEEP, ESRI Basemap

303(d) Alternative Restoration Plans/4B

- 303(d) Program Staff involved in setting environmental goals
- Implement Water Quality Standards to address environmental quality and protect uses for Surface Water, Groundwater, Sediment & Erodible Soils

Address exposures to populations that may be more highly exposed for cultural or economic reasons

Fishing & Shell
Fishing

Sediment Contact

Tribal Practices

Climate Change


Communication



Considering Tribes in CT

- New Project underway to map/document CT waters that flow into and out from tribal areas in State
- Use information to better identify whether 303(d) project areas may be associated with water resources in tribal areas
- Plan to share with tribes in state





Environmental Justice: NonPoint Source Management Program & Long Island Sound Study



Connecticut Department of Energy and Environmental Protection

CTDEEP: NonPoint Source Program

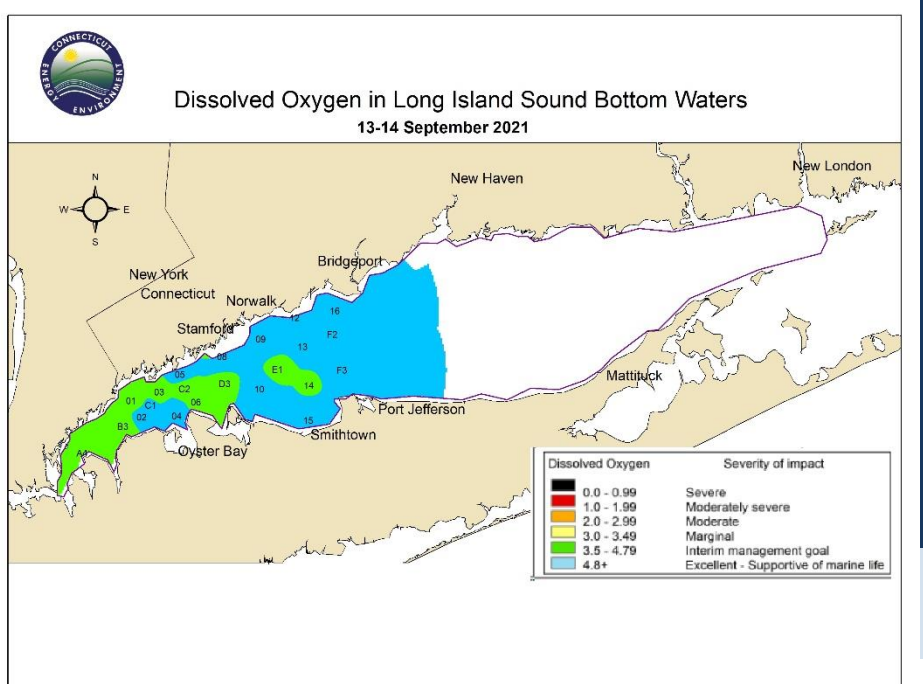
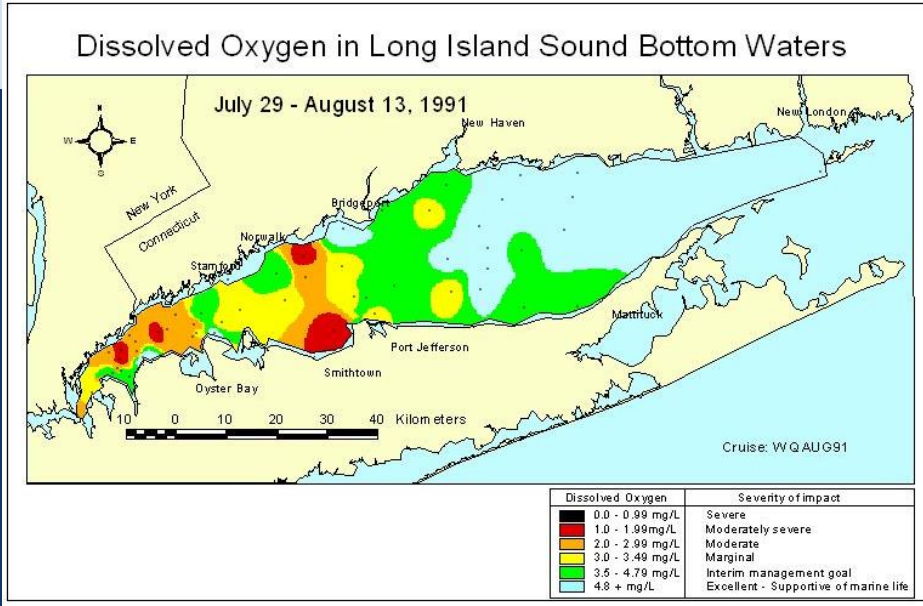
- Manages CWA 319 Grants
- Considers whether proposed grant projects support EJ communities, among other considerations
- Participates in Urban Waters Initiative Projects



Long Island Sound Study

- Long Island Sound is part of the National Estuary Program
- Established new EJ Workgroup
 - Environmental Justice Needs Assessment
 - Establish Community Impact Fund
 - Internal Assessment and Internal Conversations
 - Training

Connecticut Department of Energy and Environmental Protection



Improving EJ based Outreach to Anglers

New effort to developedfor
outreach to non-English
Speaking Angling Community

- Working with local community
- Hiring bilingual staff to directly engage with anglers in the field
- Communicate on water quality topics and fish advisories



Monitoring & Assessment Program

- Evaluate existing monitoring network and sample locations to identify which are located within EJ areas and identify EJ areas which should be prioritized for monitoring





Traci Iott

Supervising Environmental Analyst

Water Quality Group

CTDEEP

Traci.Iott@CT.gov



Connecticut Department of Energy and Environmental Protection