

# Improving Stormwater Data in the 2022 Clean Watersheds Needs Survey



## **2022 National Stormwater Roundtable**

Joshua Klein and Elisabeth Schlaudt

*Environmental Protection Agency – Office of Water – Office of Wastewater Management*

*Water Infrastructure Division - State Revolving Fund Branch*

# What is the CWNS?

“...a comprehensive assessment of the capital costs (“needs”) to meet the water quality goals of the CWA and address water quality and water-quality-related public health concerns.”

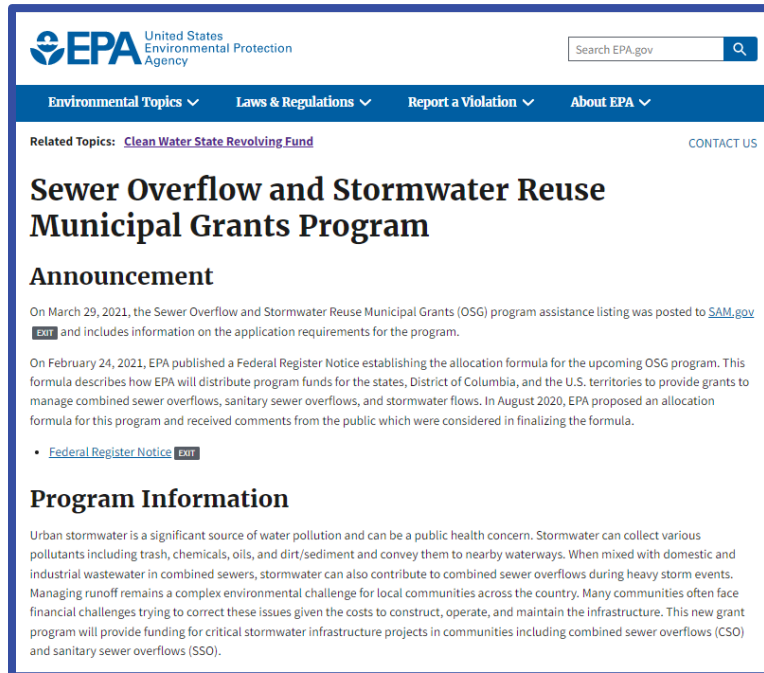
- Technical and needs (\$) data on water infrastructure are collected from all 50 states and territories.
- Capital needs existing as of January 1st, 2022 or expected to occur within the next 20 years.

Survey results are compiled in a Report to Congress

Data are available via a public [‘data dashboard’](#) on the EPA website

**Data entry:**  
March 1<sup>st</sup>, 2022 –  
February 28<sup>th</sup>, 2023

# Why the CWNS Matters



Used by:

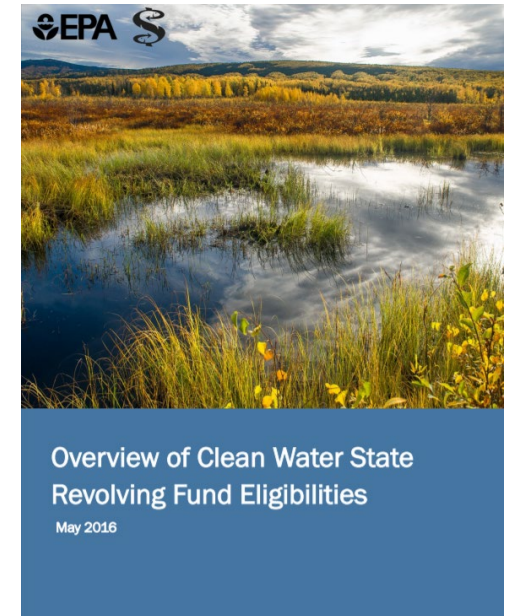
- ✓ By Congress and state legislatures in their grant and loan planning;
- ✓ For the allocation formula for the **Sewer Overflow and Stormwater Reuse Municipal Grants Program**;
- ✓ By industry and academic researchers
  - e.g., the American Society of Engineers Report Card for America's Infrastructure

# CWNS Scope

The CWNS collects information on any project eligible for funding under the CWSRF

Includes:

- POTWs
- **Stormwater**
  - **Green Infrastructure**
  - **Gray Infrastructure**
  - **General SW Management**
- CSOs
- NPS pollution control projects
- Decentralized wastewater management



See the full list of eligibilities and guidelines [here online](https://www.epa.gov/sites/default/files/2016-07/documents/overview_of_cwsrf_eligibilities_may_2016.pdf)

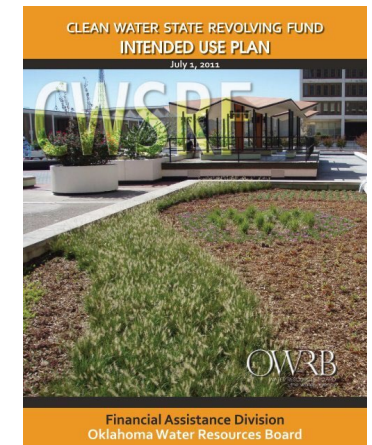
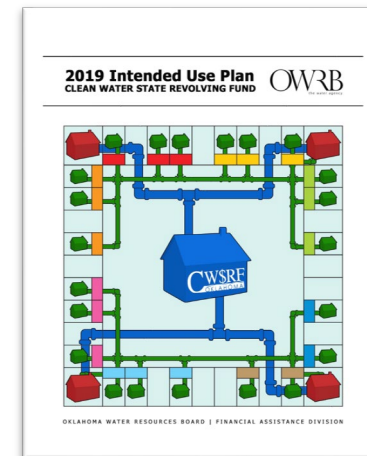
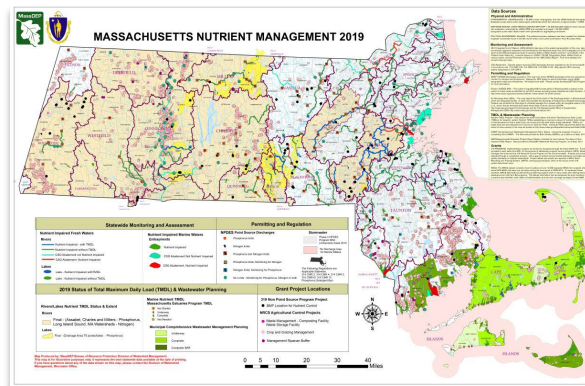
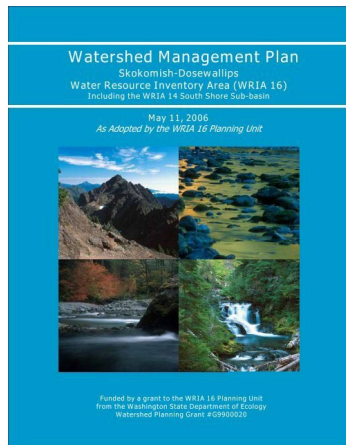
([https://www.epa.gov/sites/default/files/2016-07/documents/overview\\_of\\_cwsrf\\_eligibilities\\_may\\_2016.pdf](https://www.epa.gov/sites/default/files/2016-07/documents/overview_of_cwsrf_eligibilities_may_2016.pdf))

# How is the Survey Conducted?



# Submitting Projects and Data

- Needed projects / activities must
  - ✓ address a water quality or human health problem
  - ✓ be supported with documentation
- Supporting document(s) must include project **description** and **cost**



# Submitting Projects and Data

- Stormwater needs (projects + costs) for a whole city can be entered as a **single** entry
- Projects costs are totaled by needs category (gray, green, general stormwater management)

## Eligible

- ✓ Large/ “one-time” equipment purchase (street sweepers)
- ✓ Computer hardware/ software used for security or asset management (GIS, SCADA systems)
- ✓ Unfunded portions as of January 1<sup>st</sup> 2022 of multi-phase projects

## Not Eligible

- ✗ Equipment maintenance
- ✗ Software subscription fees, regular/ frequent database updates
- ✗ Projects for which funds have already been fully committed as of January 1<sup>st</sup> 2022

## Other options for documentation:

- Small community form
- Approved state-specific methods
- EPA cost estimation tools



# Small Community Form

## Clean Watersheds Needs Survey Small Community Form Stormwater Infrastructure

EPA is requesting your assistance to accurately account for the state's infrastructure needs by completing this form. This information will help to better represent the capital needs of stormwater facilities in small communities. Only needs as of January 1, 2022 (i.e., projects or portions of projects not funded or started as of January 1, 2022) are eligible and should be listed. Needs can include estimates for new infrastructure, updating or expanding current infrastructure, and/or meeting future growth needs (through December 31, 2041). For any questions, including if you want to report your needs for other facilities, please contact your State Coordinator, \_\_\_\_\_ at \_\_\_\_\_.

If you have planning documents that report your needs, provide the documents to your state coordinator. This form can be used to report undocumented needs. Please provide us with either an estimated cost that is certified by a professional engineer (PE) in Section 3 or information about the projects in Section 4 and EPA will estimate the costs for you using their cost estimation tools. **If you do not have access to a PE, the state coordinator can have a state PE review and certify your cost estimates.** Note that the Local Official Certification (Section 5) is required for all situations.

Please answer these questions before filling in the rest of the form:		
Does your facility have water-quality-related capital improvement needs?	<input type="checkbox"/> Yes <input type="checkbox"/> No	If no, thank you for your time and please return the form with the No box checked.
Do you have planning documents that report any of your needs (such as in a capital improvements plan or engineering report)?	<input type="checkbox"/> Yes <input type="checkbox"/> No	If yes, please email those documents to your state coordinator.
If you have any undocumented needs:		
Do you have access to a PE (consulting with or on staff) who will certify the costs of the undocumented needs?	<input type="checkbox"/> Yes <input type="checkbox"/> No	If yes, please work with them to generate costs and have them certify and sign this form before returning to the state coordinator.

### Section 1: Facility Information

Please provide general facility information and contact information.

Facility Name:	
Authority Name:	
Facility Address:	
City:	
State:	
Zip code:	
County:	
Owner Type:	<input type="checkbox"/> Public <input type="checkbox"/> Private <input type="checkbox"/> Federal
Contact Name:	
Role/Title (optional):	
Phone (optional):	
Email (optional):	

Separate forms for infrastructure types (wastewater, stormwater, decentralized, nonpoint source)

Options for reporting costs:

## 1. Provide direct cost estimate for needed projects

- Signed by Local PE

OR...

- Signed by State PE

## 2. Provide basic parameters about needed project (size/ location)

- Use EPA CET

# Cost Estimation Tools

Add/Edit Cost Estimation Tool - Stormwater

\* indicates required field.

Needs Category **VI-B - Green Infrastructure**

\* Zipcode

\* Practice Type

\* Construction Type

\* Sizing Method

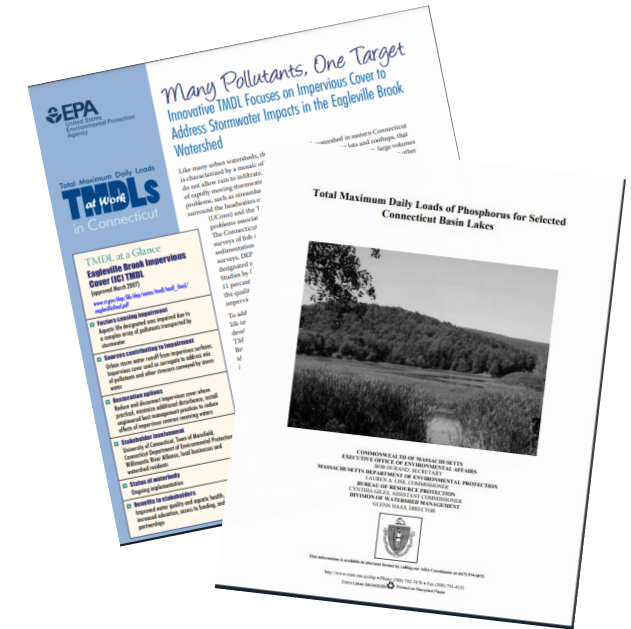
\* Quantity

- EPA-developed tools to estimate costs for needed projects
- Requires a supporting document to justify the inputs and project(s)

CET inputs in the Data Entry Portal

# State Specific Approaches

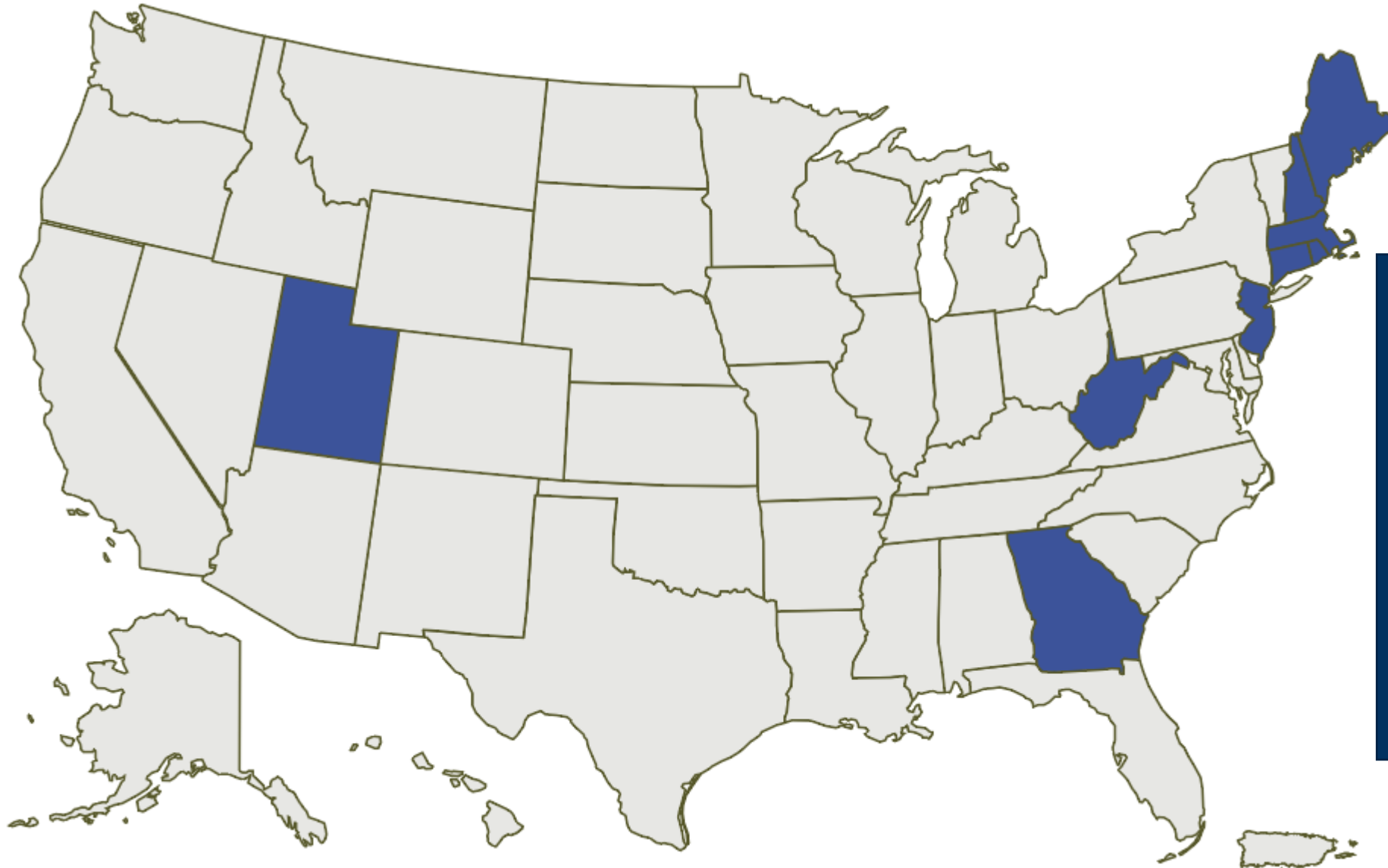
- Used where project-specific documentation does not exist, but the state knows certain projects are needed in the next 20 years
- Based on current, state-specific data



## Example: Connecticut Impervious Cover SSA

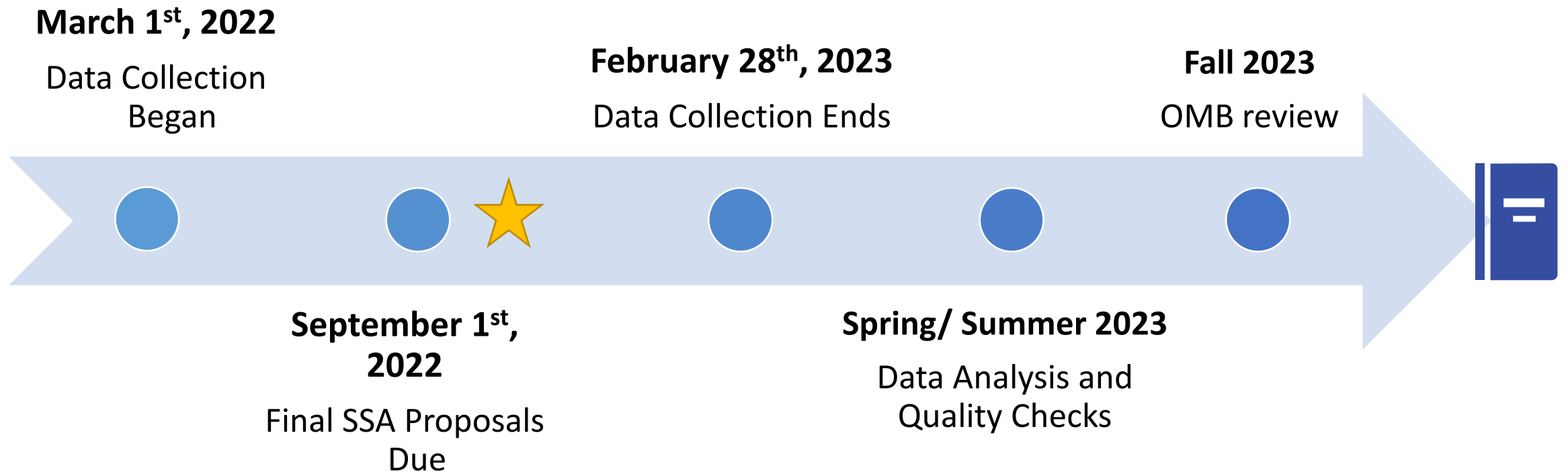
- Justification: state-wide stormwater TMDL based on impervious cover
- Data Source: cost estimates from 10 green infrastructure projects designed to reduce the effective IC in the watershed from 14% to 11%
- Method: Calculate average \$/acre cost to address stormwater impacts and apply to watersheds with >11% IC

# States with a Stormwater SSA



Connecticut  
Georgia  
Massachusetts  
Maine  
New Hampshire  
New Jersey  
Rhode Island  
Utah  
West Virginia

# CWNS Timeline



# Resources

## Clean Watersheds Needs Survey

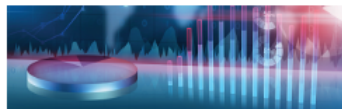
EPA's Clean Watersheds Needs Survey (CWNS) is an assessment of capital investment needed nationwide for publicly-owned wastewater collection and treatment facilities to meet the water quality goals of the Clean Water Act. These capital investment needs are reported periodically to Congress.

### About the CWNS



- [What is the CWNS?](#)
- [CWNS in Spanish](#)
- [Acerca de la CWNS - en español](#)
- [CWNS Small Community Form](#)

### CWNS Reports and Data



- [2008 CWNS](#)
- [2004 CWNS](#)

### 2012 CWNS Report and Data



- [Report to Congress](#)
- [Access to detailed data](#)

### 2012 Data and Mapping Tools



- [Data dashboard](#)
- [Mapping tool](#)

### 2022 CWNS Updates

- March 1, 2022 - February 28, 2023: 2022 CWNS is open for data collection.
- Contact your [CWNS State Coordinator](#) for questions about your state.
- May 31, 2022: Proposals for state-specific approaches for collecting and documenting eligible needs are due.
- View recording of webinar: [CWNS Stormwater Training for State Stormwater and Green Infrastructure Staff](#)

Results of the CWNS are used:

- By Congress and state legislatures in their grant and loan planning;
- For the allocation formula for the **Sewer Overflow and Stormwater Reuse Municipal Grants Program**;
- By industry and academic researchers
  - e.g., the American Society of Engineers Report Card for America's Infrastructure

### Clean Watersheds Needs Survey Small Community Form Wastewater Infrastructure

EPA is requesting your assistance to accurately account for the state's infrastructure needs by completing this form. This information will help to better represent the capital needs of wastewater facilities in small communities. Only needs as of January 1, 2022 (i.e., projects or portions of projects not funded or started as of January 1, 2022) are eligible and should be listed. Needs can include estimates for new infrastructure, updating or expanding current infrastructure, and/or meeting future growth needs (through December 31, 2041). For any questions, including if you want to report your needs for other facilities, please contact your State Coordinator, \_\_\_\_\_ at \_\_\_\_\_.

If you have planning documents that report your needs, provide the documents to your state coordinator. This form can be used to report undocumented needs. Please provide us with either an estimated cost that is certified by a professional engineer (PE) in Section 6 or information about the projects in Section 7 and EPA will estimate the costs for you using their cost estimation tools. **If you do not have access to a PE, the state coordinator can have a state PE review and certify your cost estimates.** Note that the Local Official Certification (Section 8) is required for all situations.

Note that this form is set up to collect needs for one treatment plant and the collection systems that feed that plant. If you have more than one plant, please fill out a form for each.

Please answer these questions before filling in the rest of the form:	
Does your facility have water-quality-related capital improvement needs?	<input type="checkbox"/> Yes <input type="checkbox"/> No If no, please still complete the information about your facility in Sections 4 through 5 below.
Do you have planning documents that report any of your needs (such as in a capital improvements plan or engineering report)?	<input type="checkbox"/> Yes <input type="checkbox"/> No If yes, please email those documents to your state coordinator.
Do you have access to a PE (consulting engineer with or on staff) who will certify the costs of the undocumented needs?	<input type="checkbox"/> Yes <input type="checkbox"/> No If yes, please work with them to generate costs and have them certify and sign this form before returning to the state coordinator.

**Section 1: Facility Information**  
Please provide general facility information and contact information.

Facility Name:	
Authority Name:	
Facility Address:	
City:	
State:	
Zip code:	
County:	
Owner Type:	<input type="checkbox"/> Public <input type="checkbox"/> Private <input type="checkbox"/> Federal

# Questions?



[CWNS@epa.gov](mailto:CWNS@epa.gov)

