

Strategies for Treating Stormwater as a Resource

Jonathan Bishop, California State Water Resources Control Board

National Stormwater Roundtable

October 21, 2022



California: Stormwater as a Resource

State and Regional Water Boards

**Strategy to Optimize Stormwater as a Resource
(STORMS)**

Los Angeles Municipal Stormwater Permit

Industrial General Permit

**Commercial, Industrial, and Institutional
Permit**

Water Supply Strategy



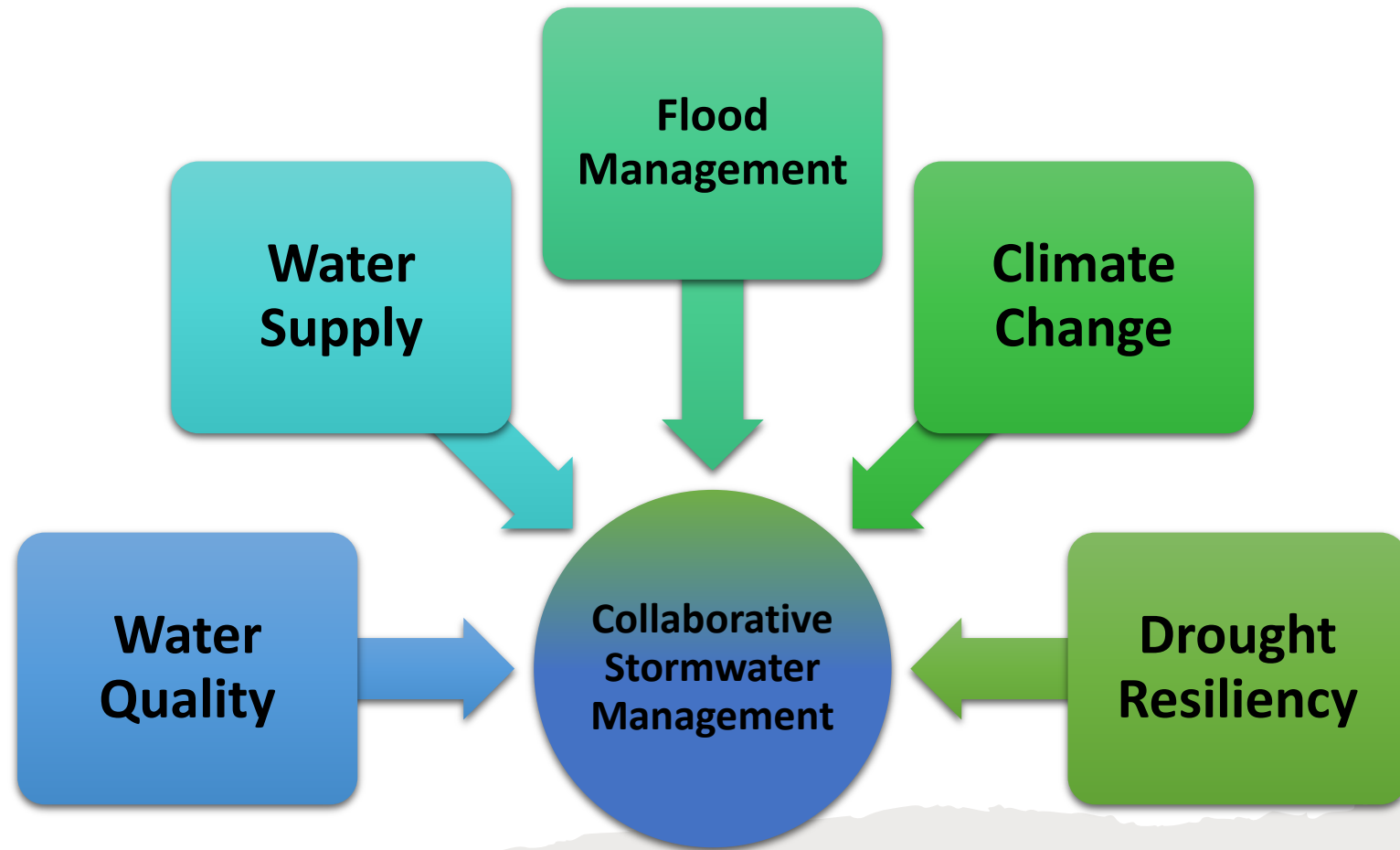
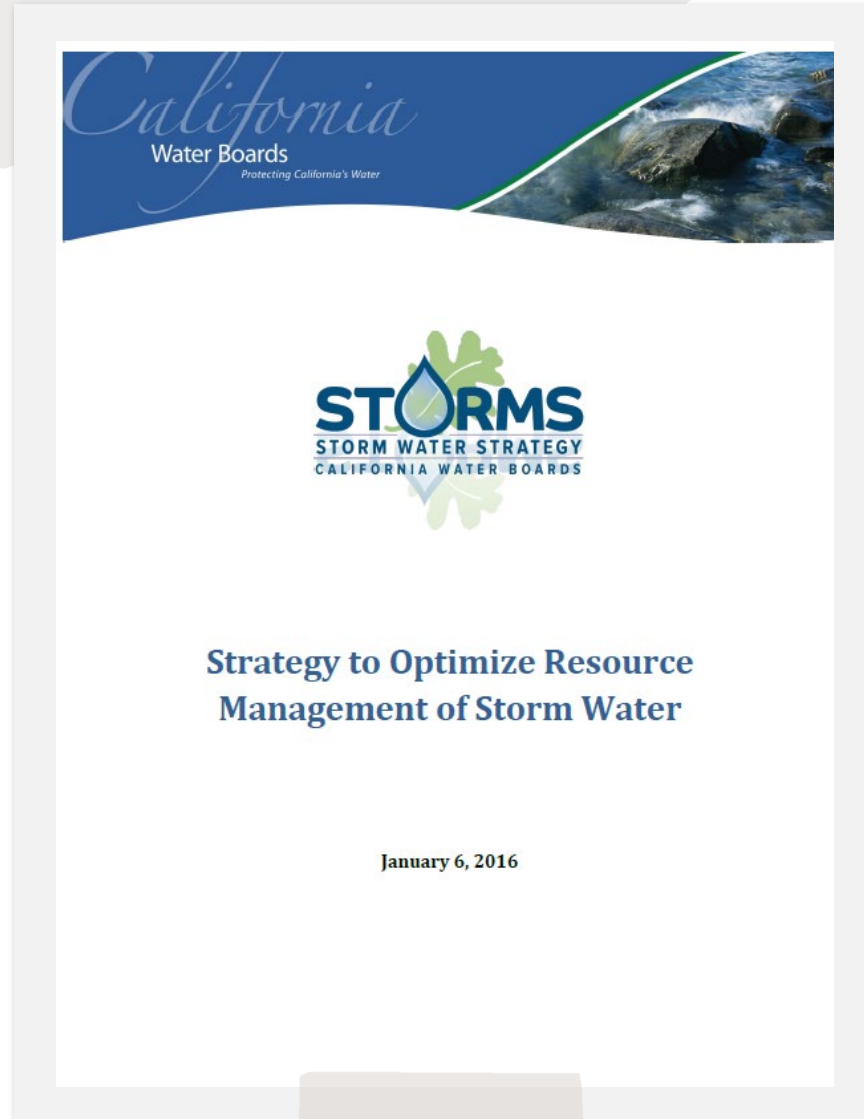
State Water Resources Control Board

- Allocate Water Rights
- Statewide Plans and Policies
- Drinking Water
- Financial Assistance
- Appellate Function
- Budget & Administration

Nine Regional Water Quality Control Boards

- Basin Planning
- Permitting
- Enforcement
- Cleanup

STORMS: An Introduction



Principles of the STORMS Program

- Advance the perspective that stormwater is a valuable resource
- Support policies for collaborative watershed-level stormwater management and pollution prevention
- Identify obstacles to funding
- Integrate regulatory and non-regulatory interests

STORMS Accomplishments

- Identified barriers and potential for enhancing urban stormwater capture and use
- Explored uncertainties related to alternative compliance
- Identified barriers to and opportunities for funding stormwater capture and use programs
- Recommendations to address zinc in urban receiving waters



Current STORMS Projects

Standardizing Cost Reporting in Municipal Stormwater Permits

Calculations of Potential Volume of Stormwater Available for Capture and Use

Provisions for the Development of Site-Specific Objectives for Copper and Zinc in Freshwaters

Urban Pesticides Provisions

Adaptive Management Guidance



A close-up photograph of water droplets on a dark, textured surface, possibly a roof or a car. The droplets are of various sizes and are captured in motion, creating a sense of freshness and movement. The background is blurred, showing more of the dark surface and some green foliage.

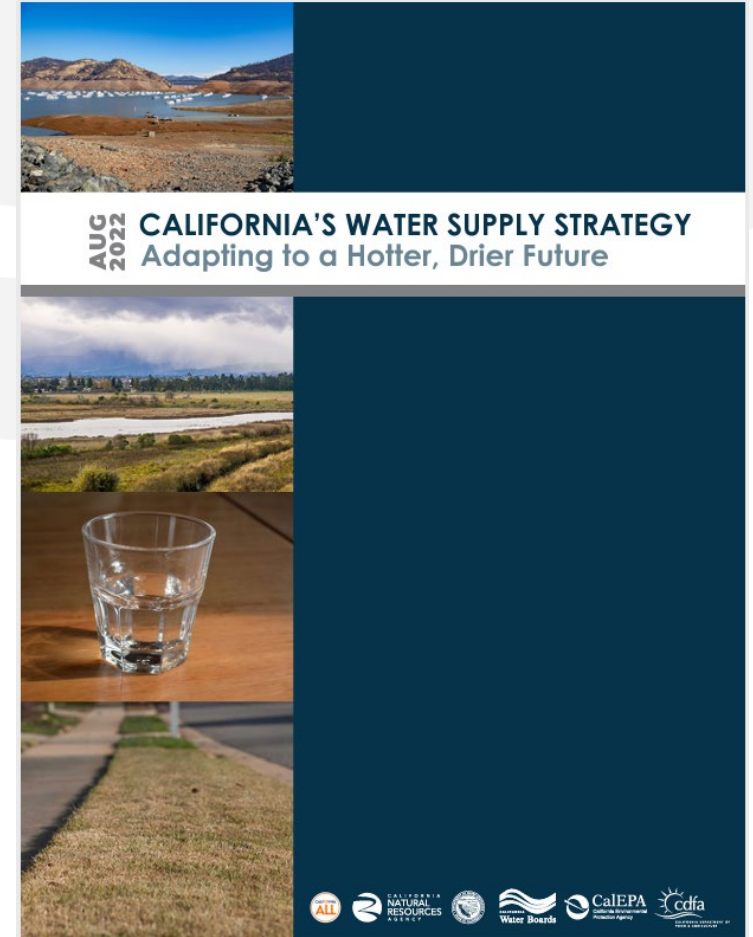
Permits that Encourage Stormwater Reuse

- Los Angeles Regions MS4
 - Regional Stormwater Mitigation Program to provide incentives for capture and infiltration of 85th percentile storm
- Industrial General Permit
 - Compliance options and incentives to capture and infiltrate the 85th percentile storm
- Commercial, Industrial and Institutional (Residual Designation)
 - Compliance options and incentives to capture and infiltrate the 85th percentile storm

California's Water Supply Strategy

“Support local stormwater capture projects in cities and towns with the goal to increase annual supply capacity by at least 250,000 acre-feet by 2030 and 500,000 acre-feet by 2040.”

- Focus on promoting stormwater capture and use projects
- Explore public-private partnerships
- Encourage urban stormwater infiltration



More information available at...

Strategy to Optimize Resource Management of Stormwater Website:

https://www.waterboards.ca.gov/water_issues/programs/stormwater/storms/

California State Water Resources Control Board Website:

<https://www.waterboards.ca.gov/>

California's Water Supply Strategy, Updated August 2022:

<https://resources.ca.gov/-/media/CNRA-Website/Files/Initiatives/Water-Resilience/CA-Water-Supply-Strategy.pdf>

**Visit us on
social media!**

