A scenic view of a lake with mountains in the background and children in the foreground. The text is overlaid on the left side of the image.

Stormwater Planning

Municipal Stormwater Permits

Washington

2020 National Stormwater Roundtable

Washington State
Department of Ecology
Water Quality Program
Abbey Stockwell

Let's talk

- Highlights of WA State Municipal Stormwater Permits
- Watershed-scale stormwater plans
 - Past efforts & lessons learned
 - Current efforts & next steps



Introduction to WA Municipal Stormwater Permits



Municipal Stormwater Permits

Phase I

(Issued 1995,
reissued 2007, 2012, 2019)

King, Snohomish, Pierce & Clark
counties; Seattle & Tacoma

Western WA Phase II

(Issued 2007,
reissued 2012, 2019)

81 cities and parts of 6 counties

Eastern WA Phase II

(Issued 2007,
reissued 2012, 2019)

19 cities and parts of 6 counties

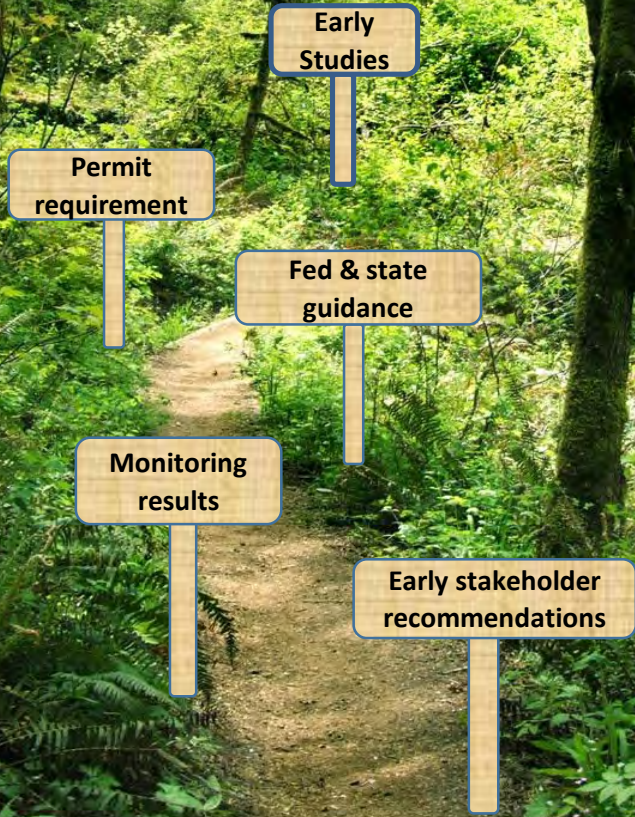
**All three permits
include Secondary
Permittees**

47 Secondaries – Ports, Schools,
Irrigation Districts, etc.





Path to watershed-scale stormwater planning



Watersheds are important



An aerial photograph of a landscape with a blue line tracing a waterway or watershed boundary. The background shows a mix of green fields, brownish agricultural land, and some buildings. The text is overlaid on a semi-transparent grey box.

Pollution Control Hearings Board Planning is an essential tool

- ▶ **A watershed scale approach is needed**
- ▶ **Development strategies can be a **water quality management tool** to protect resources**



Phase I Counties

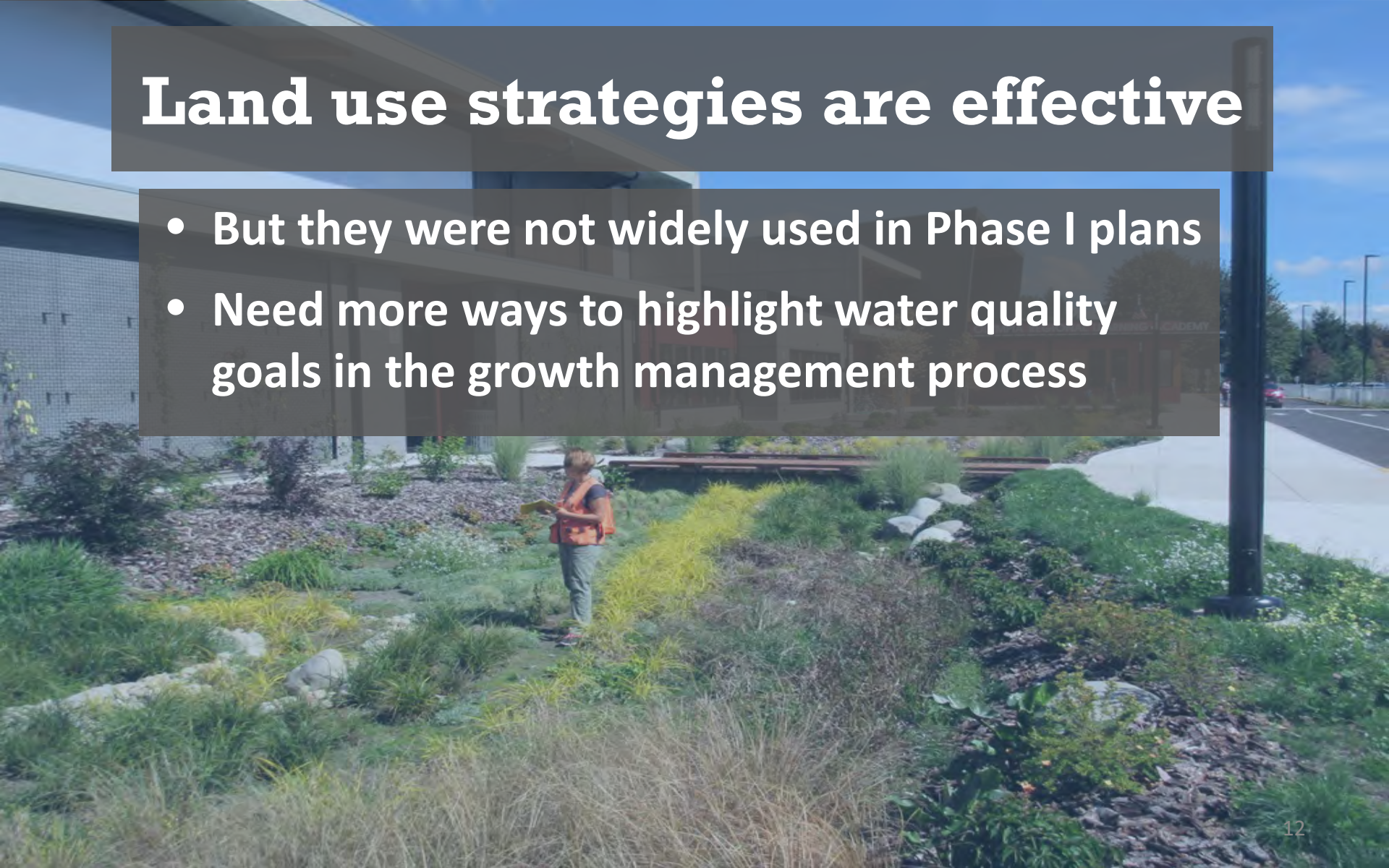
- ▶ Select a watershed under pressure of development
- ▶ Build a model to test development scenarios
- ▶ Compare results to forested conditions

Water quality will continue to be impaired without more stormwater investments



Land use strategies are effective

- But they were not widely used in Phase I plans
- Need more ways to highlight water quality goals in the growth management process



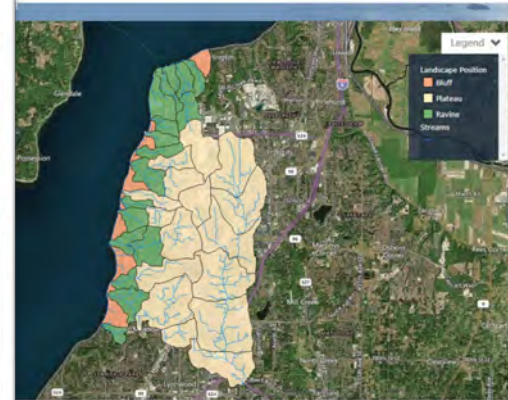
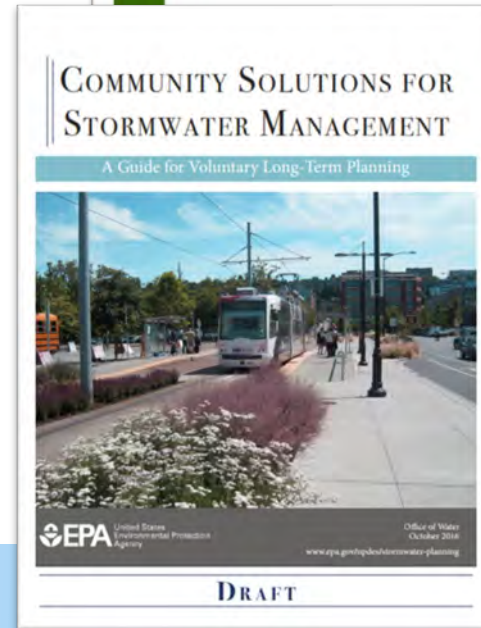
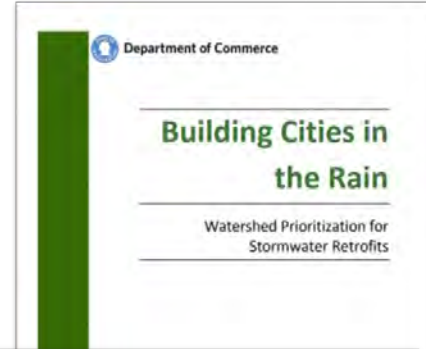
2015-16 status assessments of Puget Sound lowland streams and nearshore areas



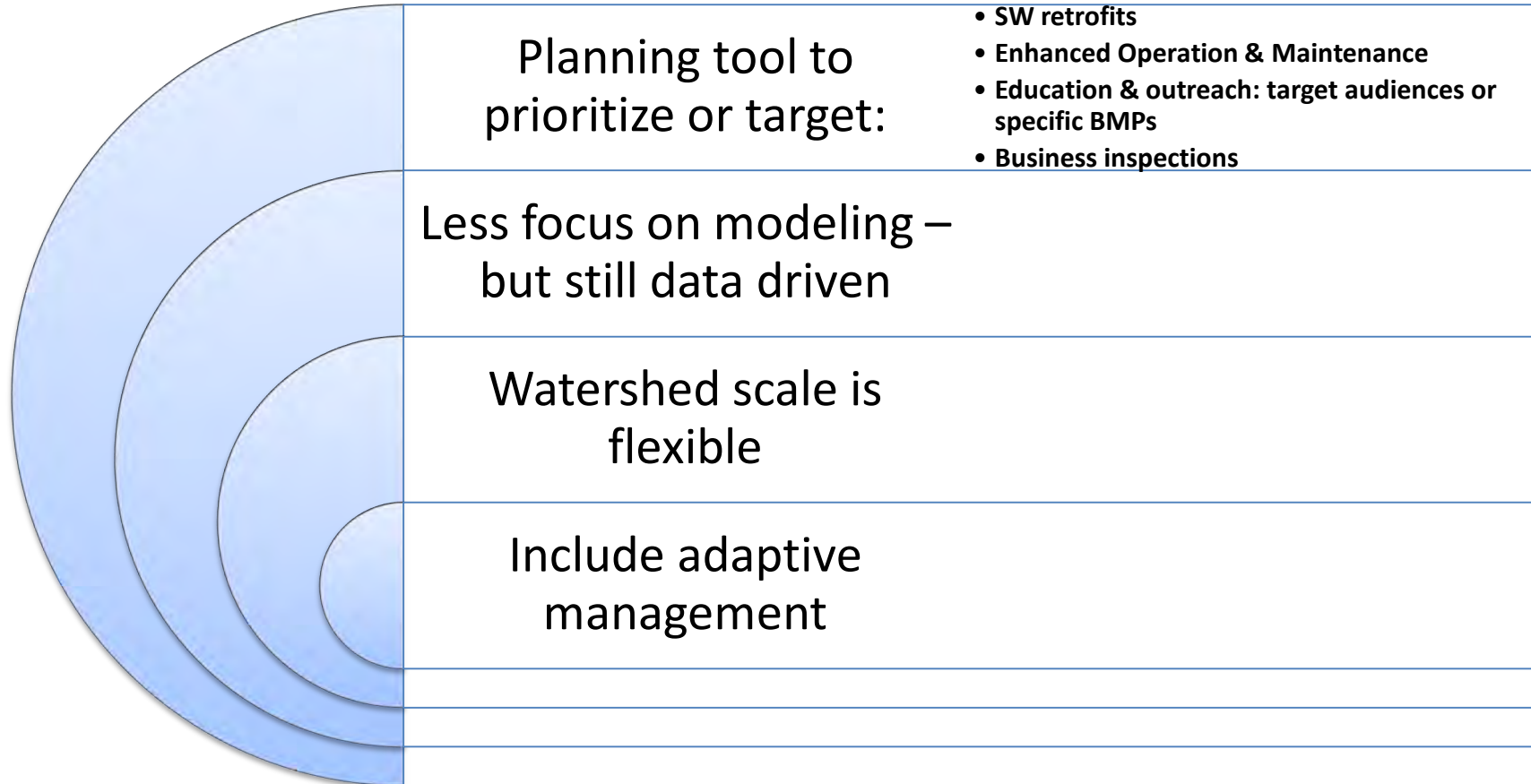
- Higher pollutant levels and lower quality habitat within the Urban Growth Areas than outside

2016 – Bumper year for guidance

- [Building Cities in the Rain](#)
(WA State Commerce)
- Stormwater Control Transfer Program (ECY)
- Watershed characterization (ECY)
- [Long term planning](#)
(USEPA)



Permit reissuance recommendations from stakeholders





Current approach

Let's get started!

Convene an interdisciplinary team

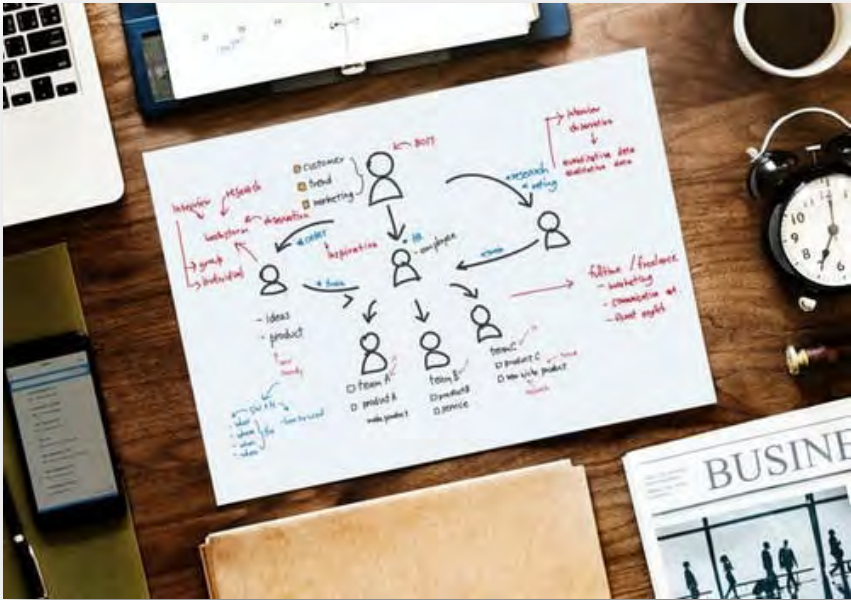


www.pexlels.com



Coordination of long-term planning

How do SW mgt needs inform local policies & development strategies?



www.pexels.com



LID code-related requirements

Continue to make LID the **preferred and commonly used approach** to development



Stormwater management action planning



Big Questions

- How can we most strategically address existing stormwater problems?
- How can we meet our future population and density targets while also accomplishing our water quality goals?

Stormwater Management Action Plan (SMAP)

- Three components:
 - Receiving water assessment
 - Receiving water prioritization
 - SMAP for a high priority basin



Develop inventory of basins inside your jurisdiction



Use existing information to prioritize your basins

- assess data gaps



Identify catchment areas for planning within priority basins



Identify specific approaches to apply within the catchment areas.



Prioritization of receiving waters



Tailored strategies or actions

Receiving water basin prioritization

Establish process to prioritize
basins for:

- Stormwater retrofits
- Tailored SW Mgt. strategies



Figure 4.3 - Management Priorities for Watersheds in the City of Redmond, Washington



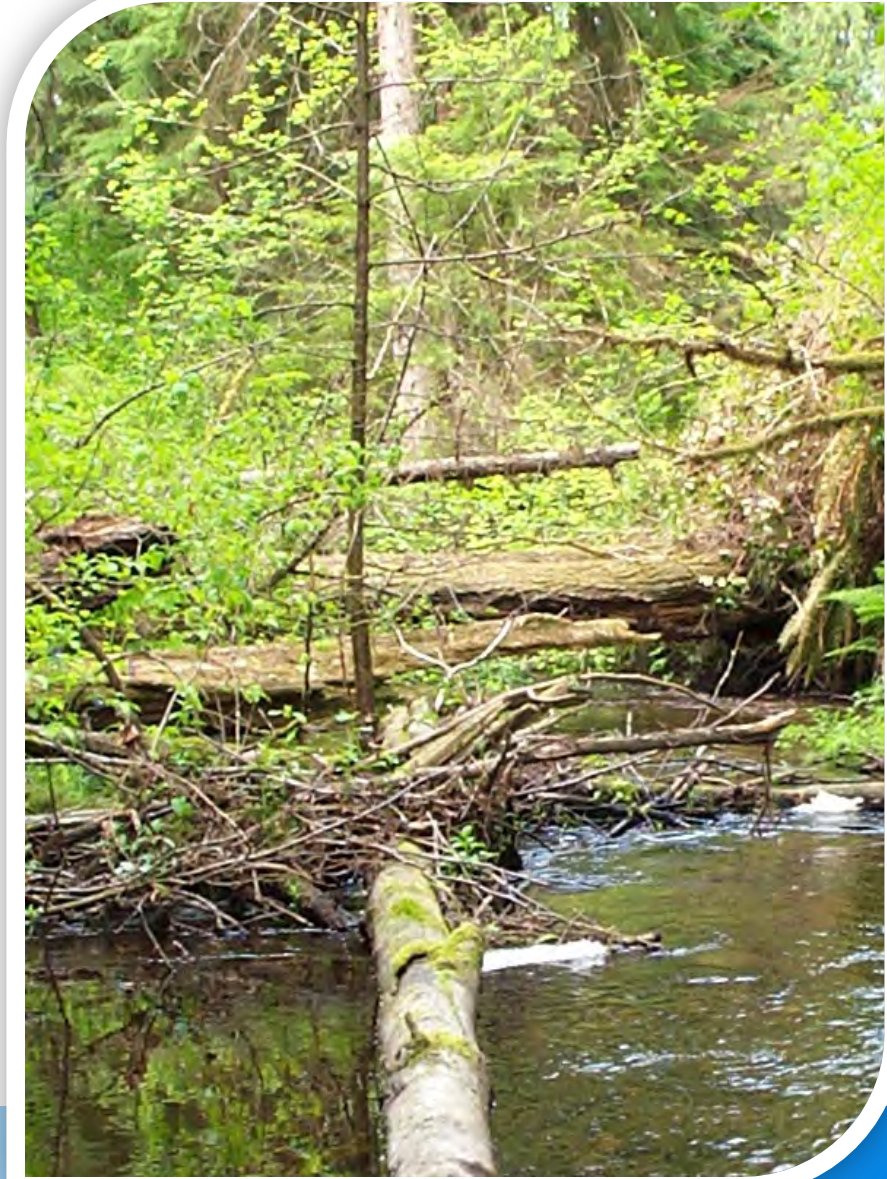
Prioritization feedback

Get input from public, tribal, federal,
state natural resource agencies



Stormwater Management Action Plan

- Shorter-term goals
 - Implementable in 0-6 yrs
 - e.g. Ed & outreach campaign
- Longer-term goals
 - Implementable in 7-20 yrs
 - e.g. Comp. plan updates
 - e.g. Regional facility planning
- Adaptive Management
 - Feedback loop



Questions

Abbey Stockwell

WA State Dept. of Ecology

Abbey.Stockwell@ecy.wa.gov

360-407-7221

