



**Maryland Department of the Environment**

---

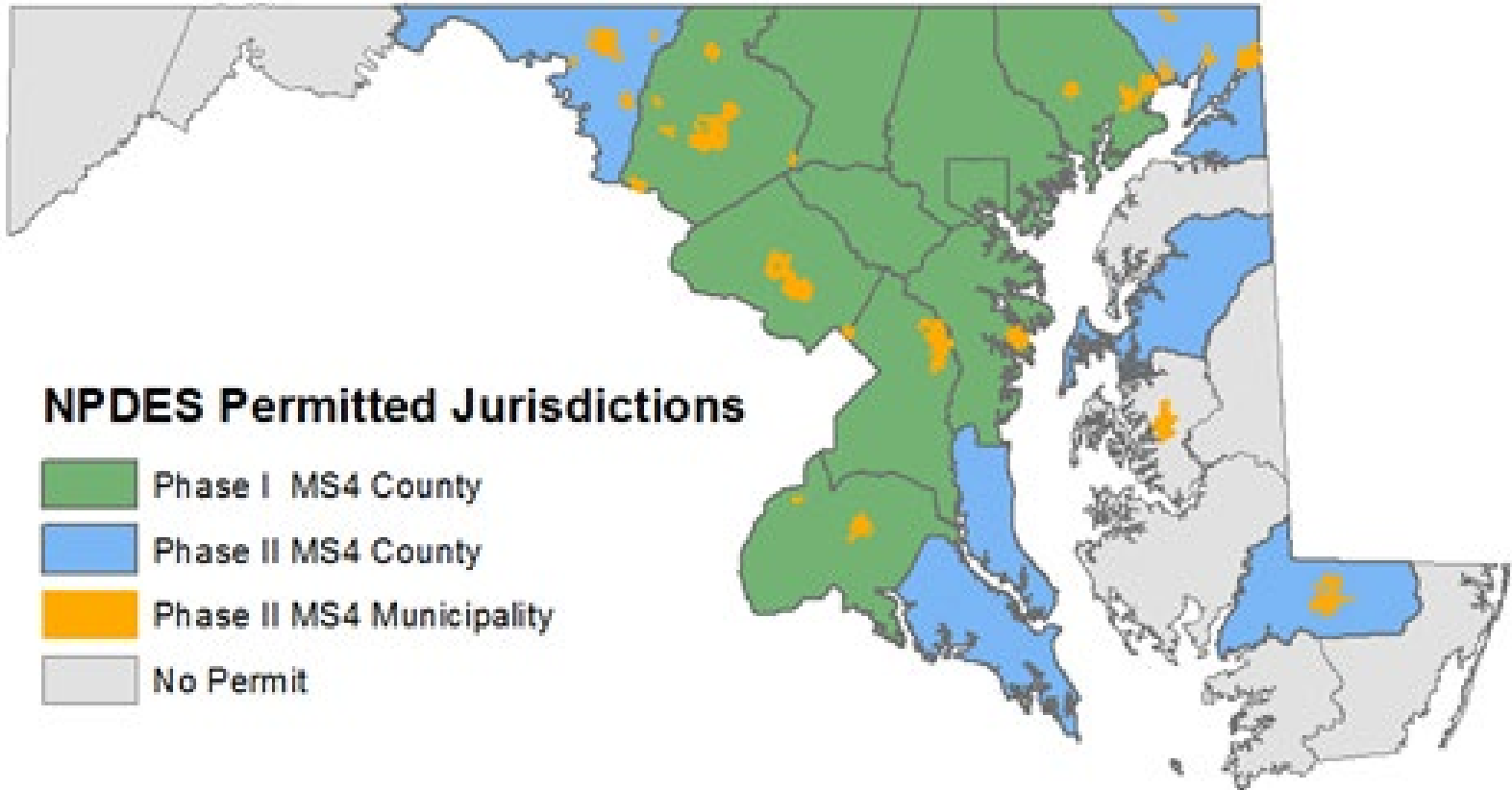
# Got Permit?

**Maryland's Tracking  
System for Unpermitted Sites**



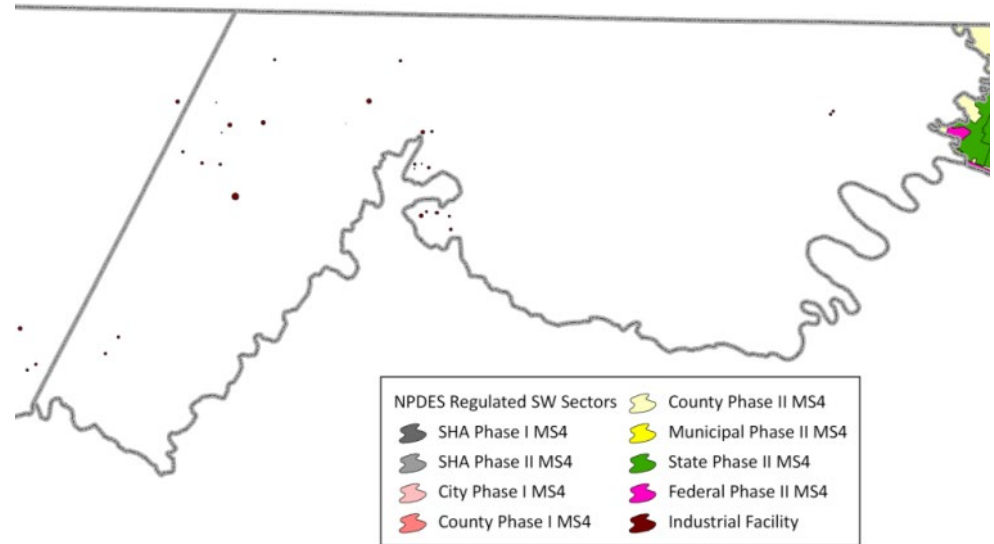
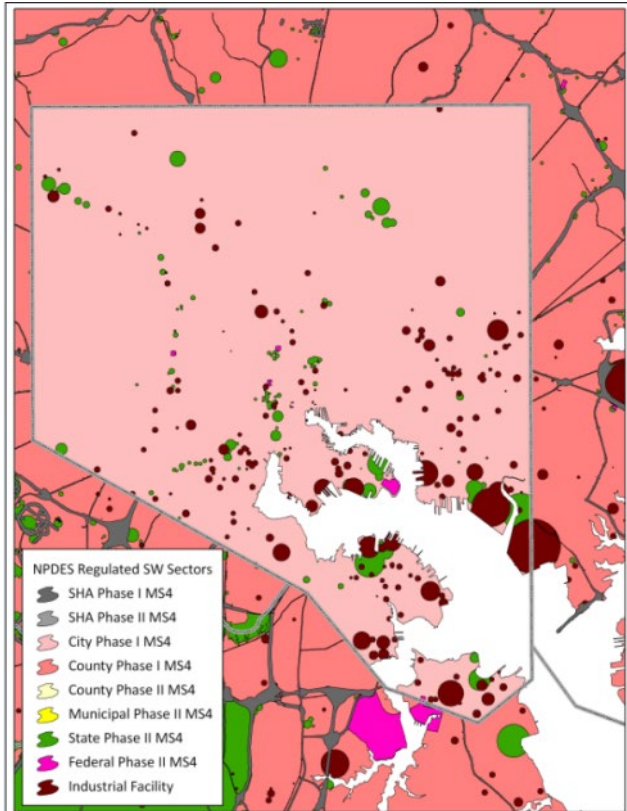


# Regulated Stormwater



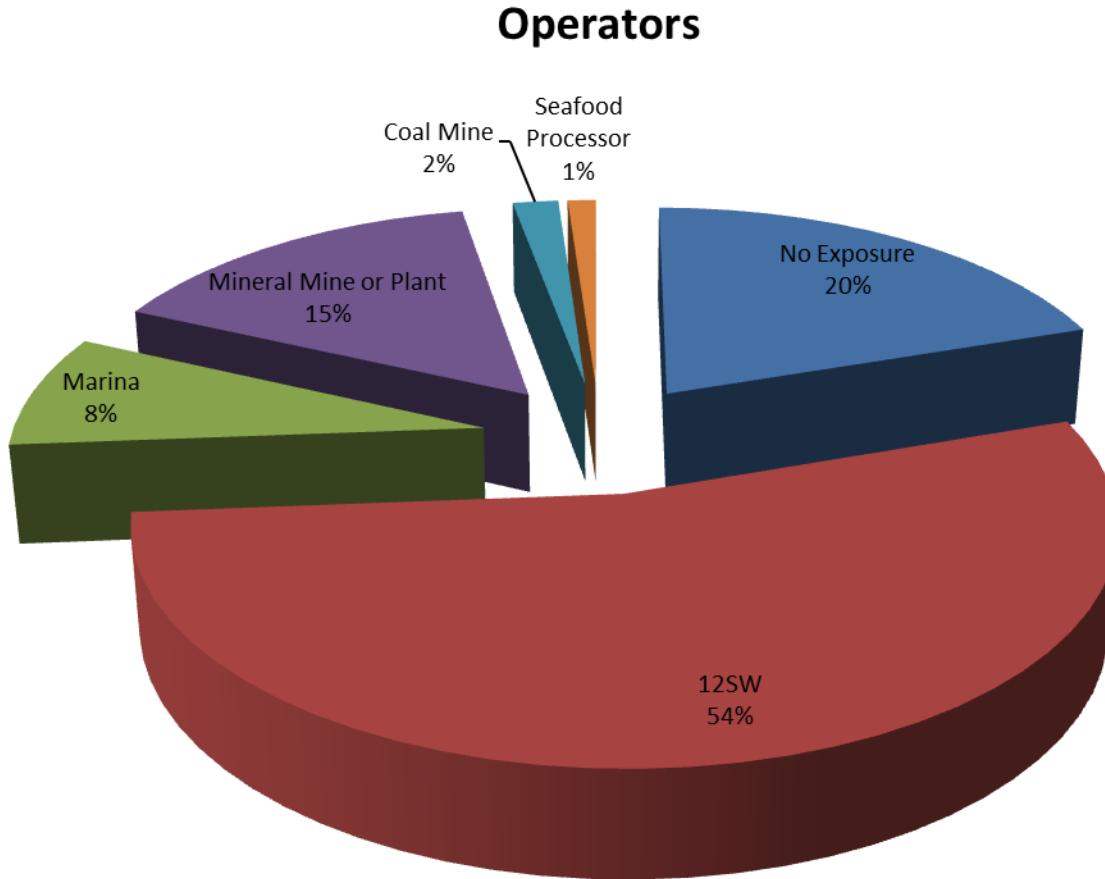


# Overlay of MS4 with Industrial





# Industrial Operators by the numbers



**2040 Total Permitted Operators**



Why are you  
picking on  
me... "they"  
don't have a  
permit!



# Needed a System

---

- We have a system that the public can access to identify permitted sites.
- We became aware of sites needing permits.
- We knew it took a concerted effort to bring operators into compliance.
- We needed a way to identify sites and bring them into compliance.



# Where to Start?

---

## **EPA List of Facilities**

- Began as 20,000+ sites provided by EPA
- Tempo Database contained facilities permitted by other MDE Administrations



# *Finding unpermitted sites*

- MDE Inspectors
- Facility Drive-Bys
- Neighbors and Competitors







# Finding Sites using Google Maps

- GIS tools make identifying business very easy.
- Site are often grouped in industrial parks.



# *What's an RQST???*

---

1. We have information leading us to believe operator **may** need a Stormwater Discharge Permit
2. We record the facility in our Tempo tracking system (tracking number contains RQST)
3. We notify the operator we believe they need permit coverage and request (**RQST**) that they submit an NOI or NEC





# TEMPO RQST Process

---

## Features:

- Customer Service approach
- Bridges Stormwater Permitting and Compliance
- Tracks facility communication
- Generates Reports

## GOALS:

- Better Customer Service Records
- Compliant Facility Operations



# The Ideal Tracking Process

---

- Notify Facility, Up to 3 Letters
- Create TEMPO AI#, if needed
- Given 30 days to respond to each letter
- Referred to Compliance after 90 days,  
if No Response and/or No NOI



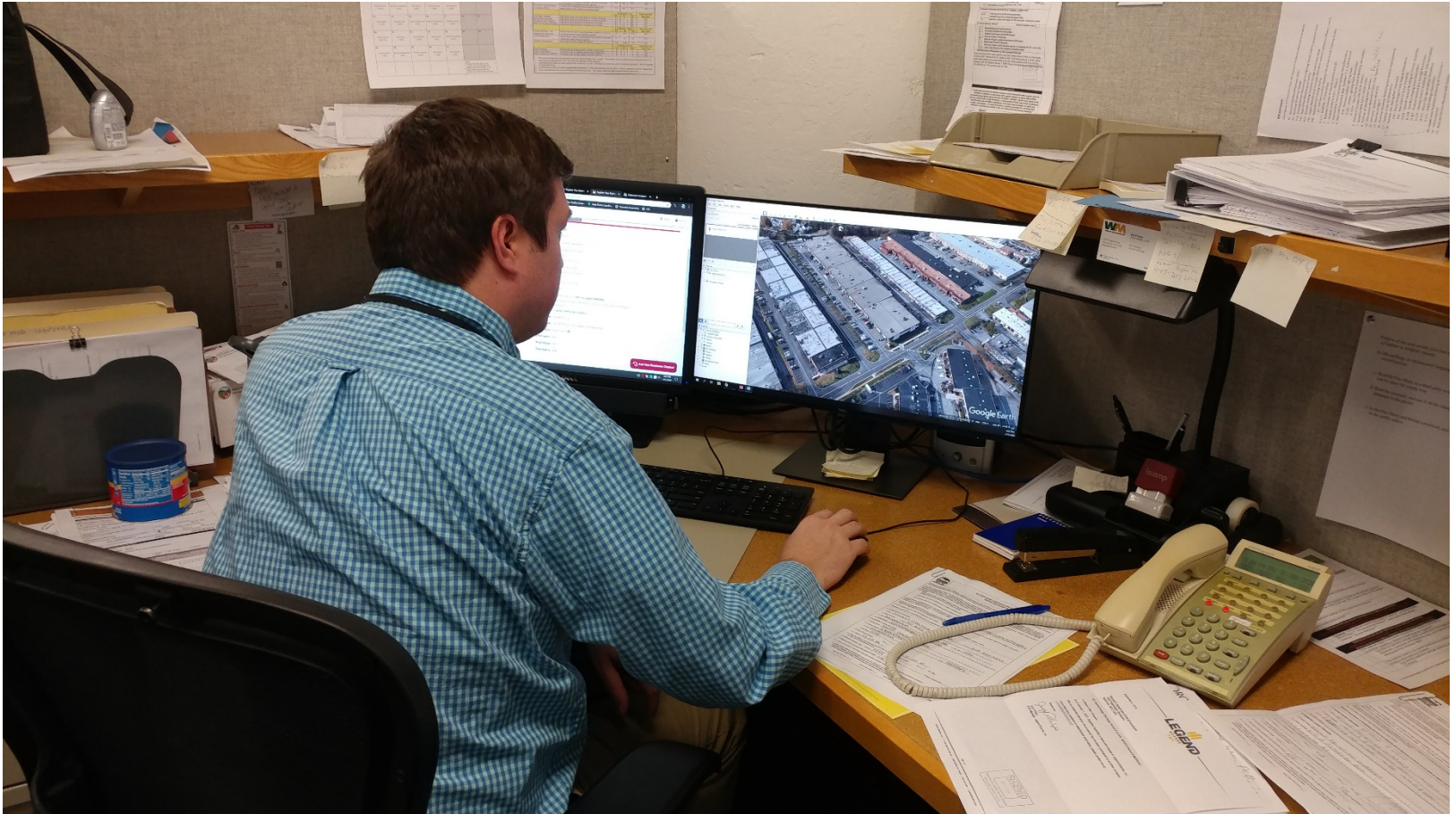
# Not so Ideal Process

---

- Most operators need to be convinced they need coverage.
- Difficult to get letters to the 'right contact'.
- Stormwater is not a language everyone speaks.
- Some contacts cannot or will not access the internet.
- The whole process takes time.



# Dedicated Staff Critical





# Other Process Goals

---

- Eliminating Unnecessary MDE Actions
- Prevents additional contact to facilities that DON'T need permitting
- Reduces unnecessary site visits



# Progress

---

- Stormwater Training has been added twice a year to assist new permittees.
- Resources for industrial like facilities.
- In the last 6 months 91 identified facilities became covered.
- Down to 578 left to review out of the initial 20,000...





# Questions / Concerns?

---

Paul Hlavinka

410-537-3323 (group number)

[paul.hlavinka@maryland.gov](mailto:paul.hlavinka@maryland.gov)