

# Water Quality Trading and Stakeholder Engagement

Idaho Department of  
Environmental Quality  
Graham Freeman



# Historical Perspective

- 2000 – Lower Boise Trading Demonstration Project
  - Framework
  - No Trading
- 2002 – Upper Snake-Rock Trading Framework
  - Framework
  - PS to PS Trade



# Historical Perspective

- 2010 – Idaho Water Quality Trading Guidance
- 2013 - USDA Innovation Grant
  - ID, OR, WA; EPA R10; Willamette Partnership; Freshwater Trust
  - Regional Recommendations



# Historical Perspective

- 2016 – Idaho Water Quality Trading Guidance
  - Incorporate regional recommendations
  - Sideboards
  - Encouraged local frameworks
  - Public comment

## Water Quality Trading Guidance

---

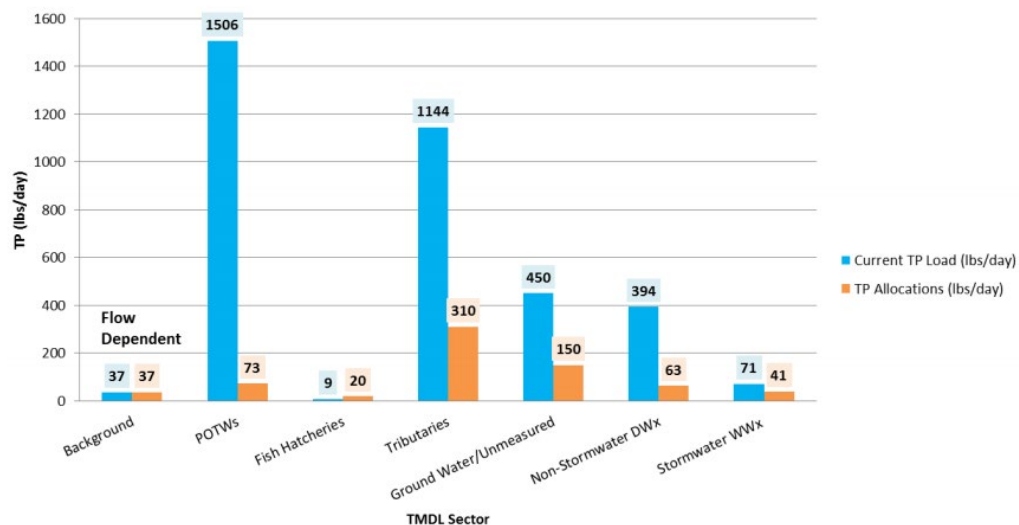


State of Idaho  
Department of Environmental Quality

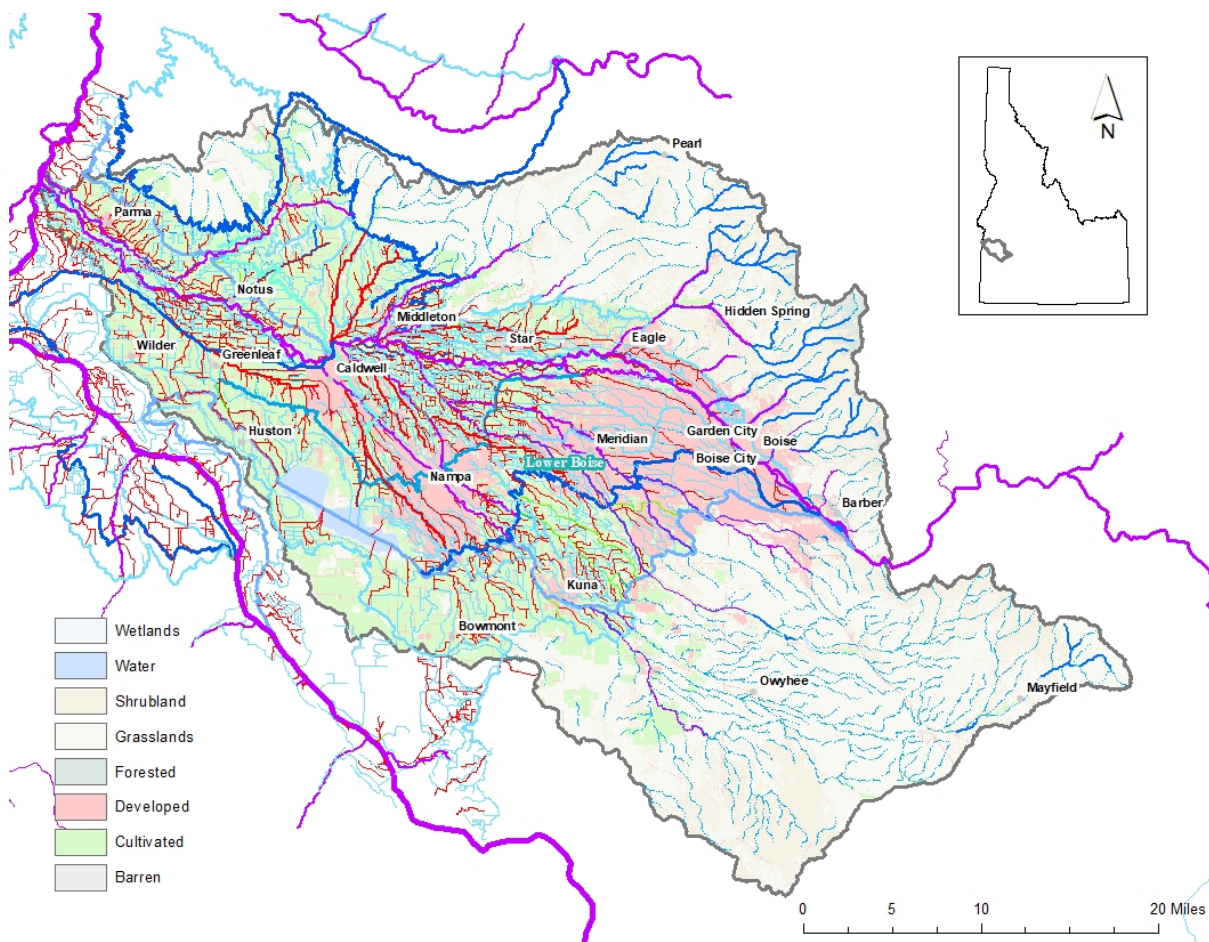
October 2016

# Trading Impetus

- 2015 – Lower Boise River TP TMDL
  - Seasonal Point Source Targets (0.1 and 0.35 mg/L)
  - 82 – 98% Point Source Reductions
  - Recognized Trading
  - No Reserve for Growth



# Lower Boise Subbasin

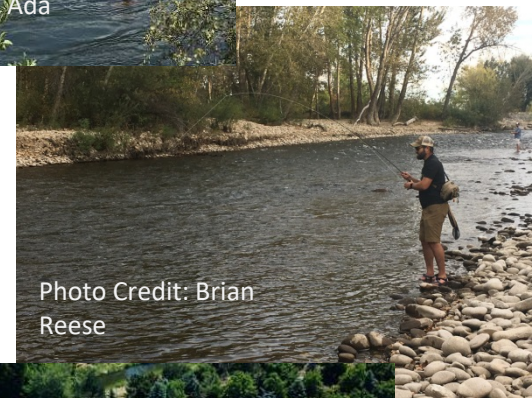


- 40% of Idaho's Population
- Rapid Growth
- Mixed Use
- Irrigated Ag
- Conversions



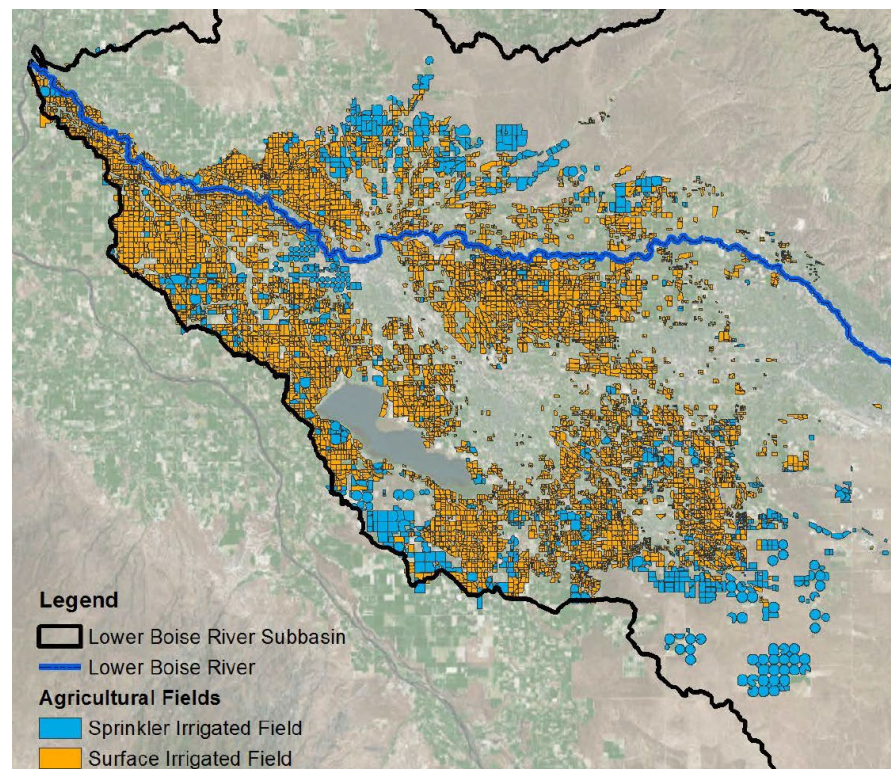
# Lower Boise River Stakeholders

- Watershed Advisory Groups
  - Local stakeholders
  - Varying interest
  - Legal consultation requirement
- Represent Potential Buyers and Sellers
- Environmental Interest
- Interested in Local Framework



# Framework Development

- Multiple Workgroup Meetings
  - Facilitated by Willamette
- Draft Concept
  - Develop required elements (ratios, baseline, credit life, etc.)
- Technical Analysis
  - Baseline scenarios
  - Watershed and Field Scale





# Outcomes

- Final Draft Presented to Working Group (Fall 2016)
  - Workgroup voted not to finalize
- Little interest in continuing framework
- Some supplier interest
  - Limited buyer Interest
- Reevaluate strategy

# Lessons Learned - Baseline

- Baseline Perceptions
  - Limits Supply
  - Not equitable
- Solutions
  - Phased
  - Other

*Table 5. Total phosphorus baseline obligation results using Option B<sup>15</sup>.*

Tributary	All Fields		Surface Irrigated Fields Only	
	Baseline TP Reduction (lb/acre)	Fields with loading above baseline	Required TP baseline (lb/acre)	Fields with loading above baseline
Mason Creek	2.63	460 (45%)*	2.86	395 (41%)
All Tributaries	1.21	6,200 (68%)*	1.62	4,982 (62%)

*\*These results would change if a phased baseline is adopted.*

# Lessons Learned – BMPs

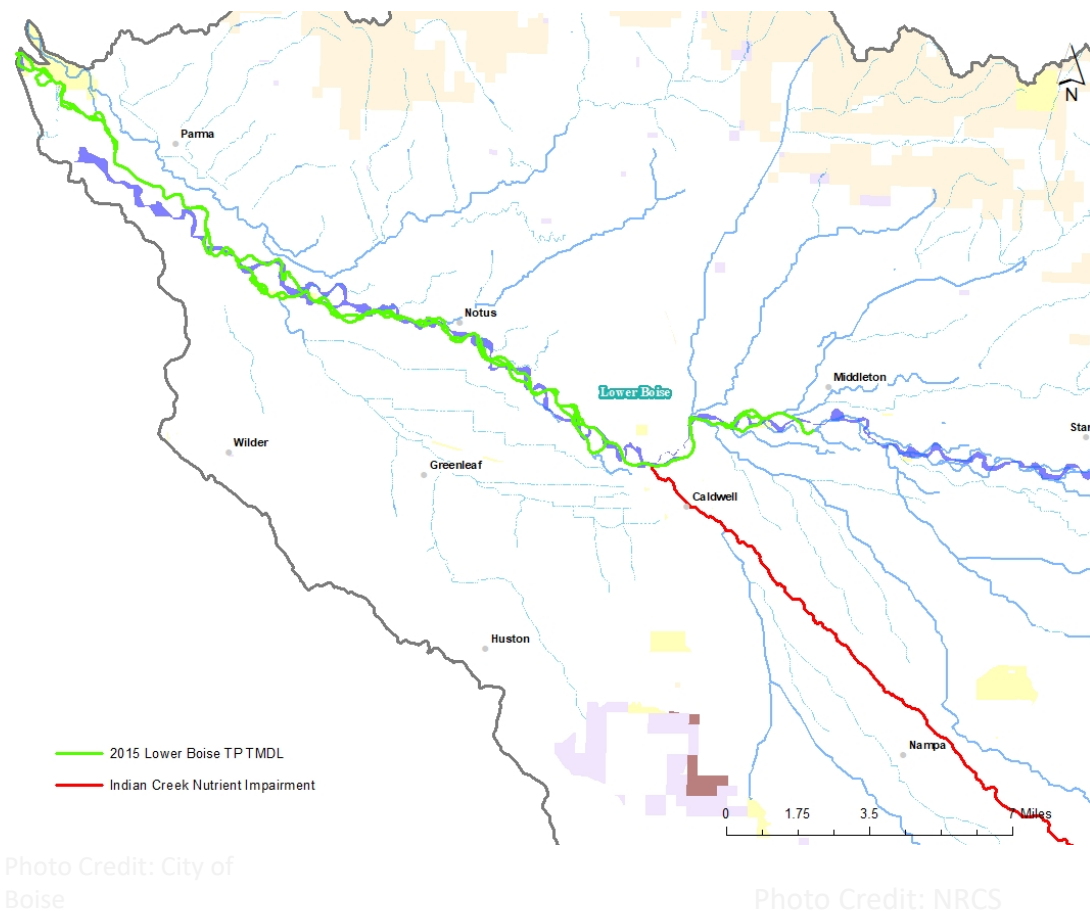
- Not all BMPs are equal
  - On field vs in Drain BMPs
  - Competitive advantages – Baseline
  - Competitive advantage – Uncertainty
- Solutions
  - ???





# Lessons Learned – Localized Impacts

- TMDL – Mainstem
- Tributary Impairments
  - Indian Creek
- Potential Solutions
  - Develop TMDLs



# Lessons Learned – Market Characteristics

- Who are the buyers?
  - 4 Majors
  - Who else
- Perceived risk
  - Cost Benefit
- Timing
  - No Reserve for Growth
- Other
  - Temperature



Photo Credit: City of  
Boise

Photo Credit: NRCS

# Moving Forward

- Reevaluate State Guidance
  - Updated Policy Memo
  - Temperature Trading
- Lower Boise Trading
  - Develop Tributary TMDLs
  - Gauge Stakeholder Interest
  - Revisit draft framework
- Mid Snake TP TMDL



# Questions

Graham Freeman  
Idaho Department of Environmental Quality  
[Graham.freeman@deq.idaho.gov](mailto:Graham.freeman@deq.idaho.gov)  
208-373-0461

