



Hazardous Waste Reporting Requirements for Industrial Users

Jan Pickrel, US EPA

April 18, 2018
Silver Spring, MD



U.S. Environmental Protection Agency



What is Hazardous Waste?

Listed Waste

- A solid waste that is listed in 40 CFR Part 261 Subpart D; or

Characteristic Waste

- A solid waste that exhibits at least one of four characteristics identified in 40 CFR Part 261



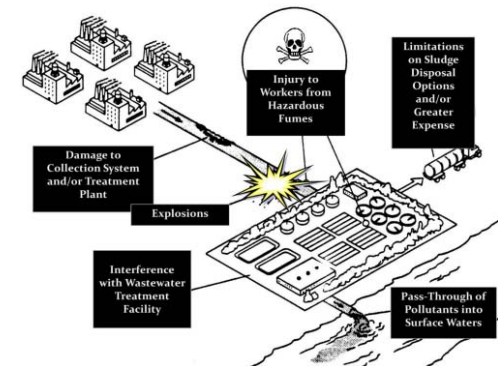
Best Practices Guidance

- Published November 2016
- Hazardous and Toxic Chemicals Regulations
- Identifying IUs
- Permitting

Best Practices for NPDES Permit Writers and Pretreatment Coordinators to Address Toxic and Hazardous Chemical Discharges to POTWs

EPA-830-B-16-001

November 2016



United States Environmental Protection Agency

Office of Water



Best Practices for Identifying Hazardous and Toxic Chemicals

- Information gathering
- Data consideration
- Identifying IUs





Tools for NPDES Permit Writers and Pretreatment Coordinators

- Enforcement and Compliance History Online (ECHO)
- Discharge Monitoring Report Pollutant Loading Tool
- EPA Geospatial Program and GeoPlatform Mapping
- Census and Industry Databases



Notification Requirements

- All IUs that discharge a substance that, if otherwise disposed of, would be characteristic or listed wastes under 40 CFR Part 261 and meet the following criteria:
 - Total hazardous waste discharged is ≥ 15 kg/month; or
 - Waste discharged is acute hazardous waste.
- Hazardous waste notification requirements can be found at 40 CFR 403.12(p).
- Notification must be sent to:
 - Local Sewerage Authority (i.e., POTW),
 - EPA Regional Waste Management Director, and
 - State Hazardous Waste Authority



Notification Requirements (continued)

- When:
 - IUs prior to August 23, 1990 – no later than February 23, 1991
 - IUs after August 23, 1990 – no later than 180 days after discharge of hazardous waste
 - Newly identified hazardous waste – within 90 days of the effective date of the regulations
- Frequency:
 - Once for each hazardous waste



Notification Contents

IUs discharging ≥ 15 kg per month or any quantity of acute hazardous wastes, must report:

1. Name of the hazardous waste as set forth in 40 CFR Part 261
2. EPA hazardous waste number (code)
3. Type of discharge to the sewer (continuous, batch, or other)
4. . Certification that the IU has a program in place to reduce the volume and toxicity of hazardous wastes generated to the degree it has determined to be economically practical



Notification Contents (continued)

IUs discharging > 100 kg of hazardous waste per month, must report:

5. The hazardous constituents
6. The estimated mass and concentration of such constituents discharged during the calendar month in which the one-time report is made.
7. The estimated mass of constituents in the wastestream expected to be discharged during the 12 months following the notification.

