



# IOWA DEPARTMENT OF NATURAL RESOURCES

---

LEADING IOWANS IN CARING FOR OUR NATURAL RESOURCES

# Introduction

- Ted Petersen
- Supervisor -  
Regional Field  
Office #5
- Statewide  
Enforcement  
Coordinator –  
Storm water /  
Wastewater

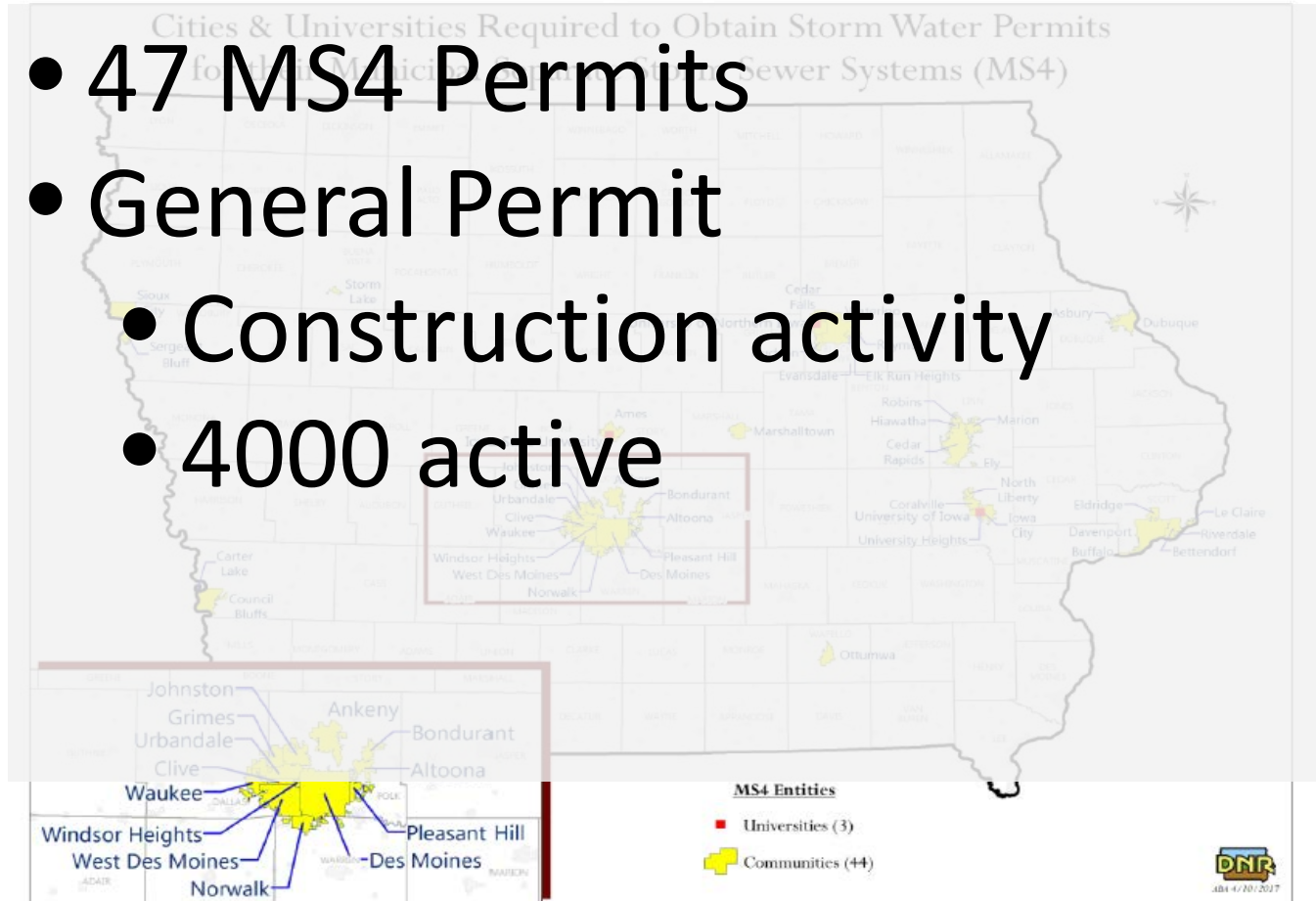


# Overview

- Identify the challenges with rapid population growth and development in Iowa
- Describe how these challenges put a strain on state and local agencies resources
- What actions were taken to improve the storm water programs

# Iowa's Storm Water Program

- 47 MS4 Permits
- General Permit
  - Construction activity
  - 4000 active

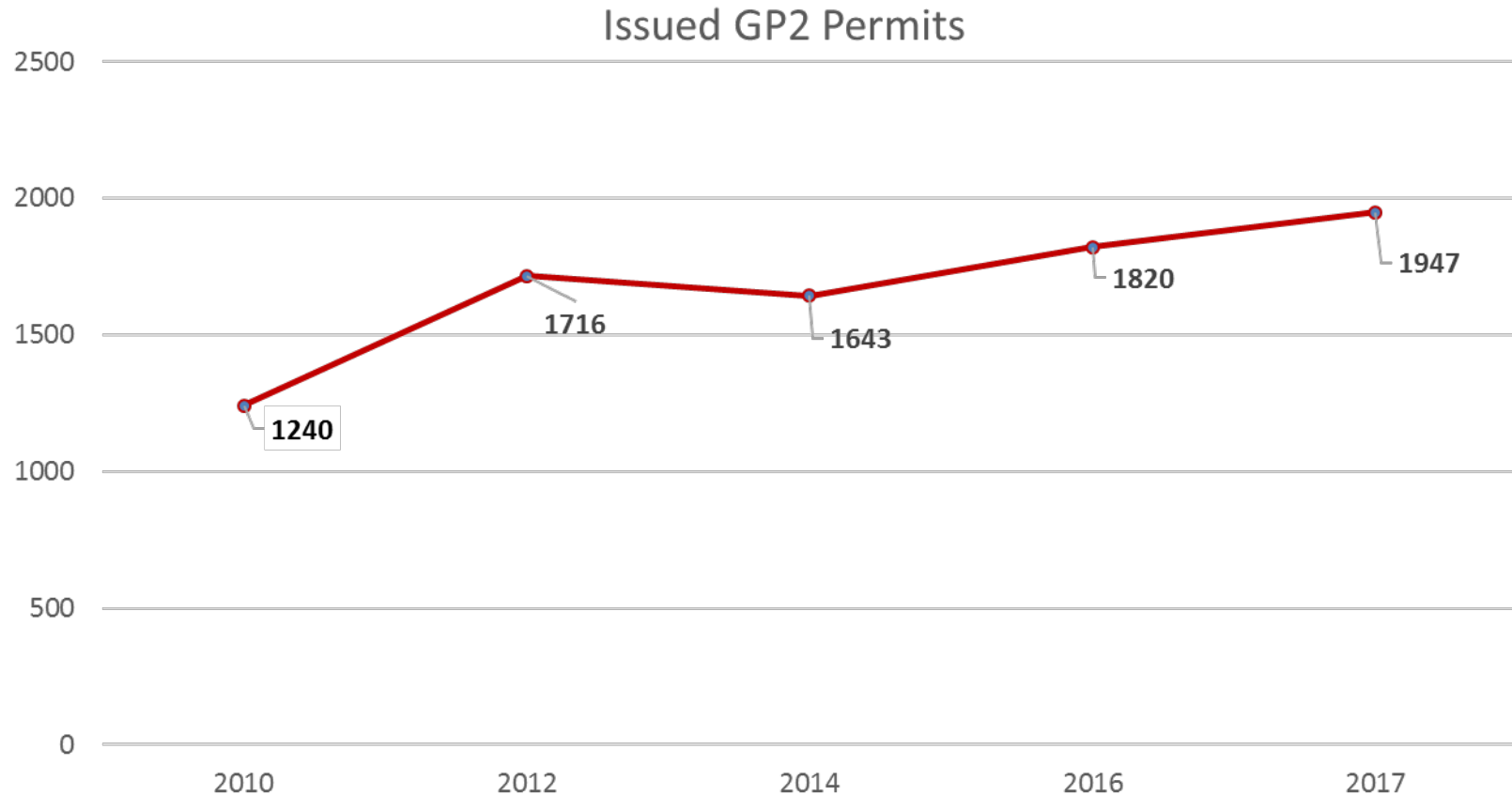


# MS4 Communities Growing - FAST

Populations - Between 2010 and 2016

- Waukee 56% (19,284)
- Bondurant 50% (5,796)
- Grimes 44% (11,909)
- North Liberty 38% (18,520)

# Increased Construction Activity



# Public Awareness



New development rule no longer  
topsoil

Matthew Patane, mpatane@dmreg.com

Published 1:13 p.m. CT Jan. 27, 2018



Key achievement or drop in bucket? What \$282 million  
water quality bill means for Iowans

Published 1:13 p.m. CT Jan. 27, 2018 | Updated 1:12 p.m. CT Jan. 28, 2018

2015

Brianne Pfannenstiel and Donnelle Eller, The Des Moines Register

G+ GOOGLE

TWITTER

Share your feedback to help  
improve our site experience!

FROM THE USA TODAY NETWORK

This is an archived article and the information in the article may be outdated. Please look at the time stamp on the story to see when it was last updated.

DES MOINES, Iowa — The Iowa Supreme Court has ruled against Des Moines Water Works in its attempt to pursue damage payments from northwestern Iowa counties it says allowed polluted



IOWA DEPARTMENT OF NATURAL RESOURCES  
CHUCK GIPP, DIRECTOR



# Citizen Complaints – What we knew





# What Next?

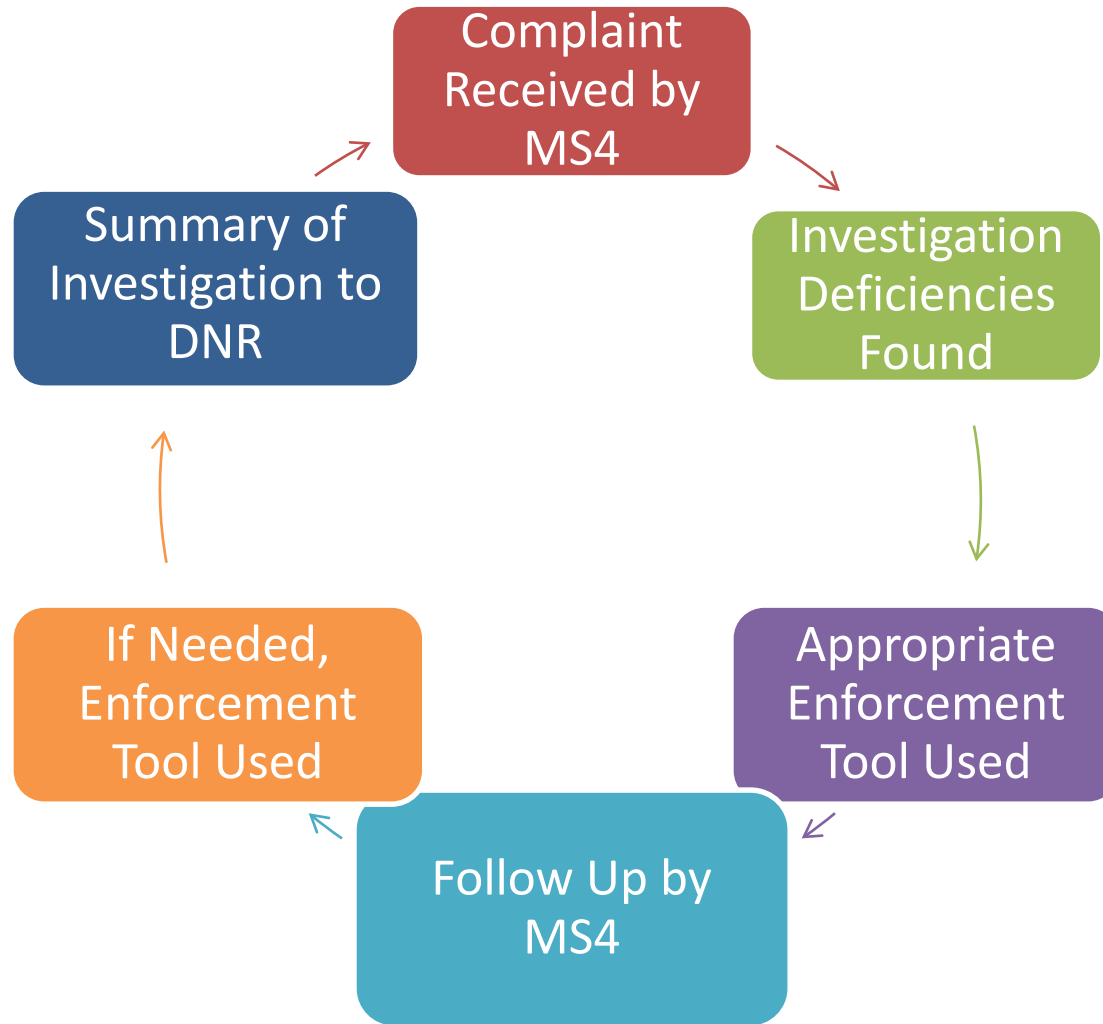
## 2016 – DNR hosted meetings

- Complaint Process
- Type of Complaints
- Multiple Agencies
- Other Challenges

# Complaint Process - Breakdowns

1. Communication
2. Enforcement
3. Timeliness
4. Consistency
5. Short Term Compliance

# Complaint Process - Revised



# Other Action Items

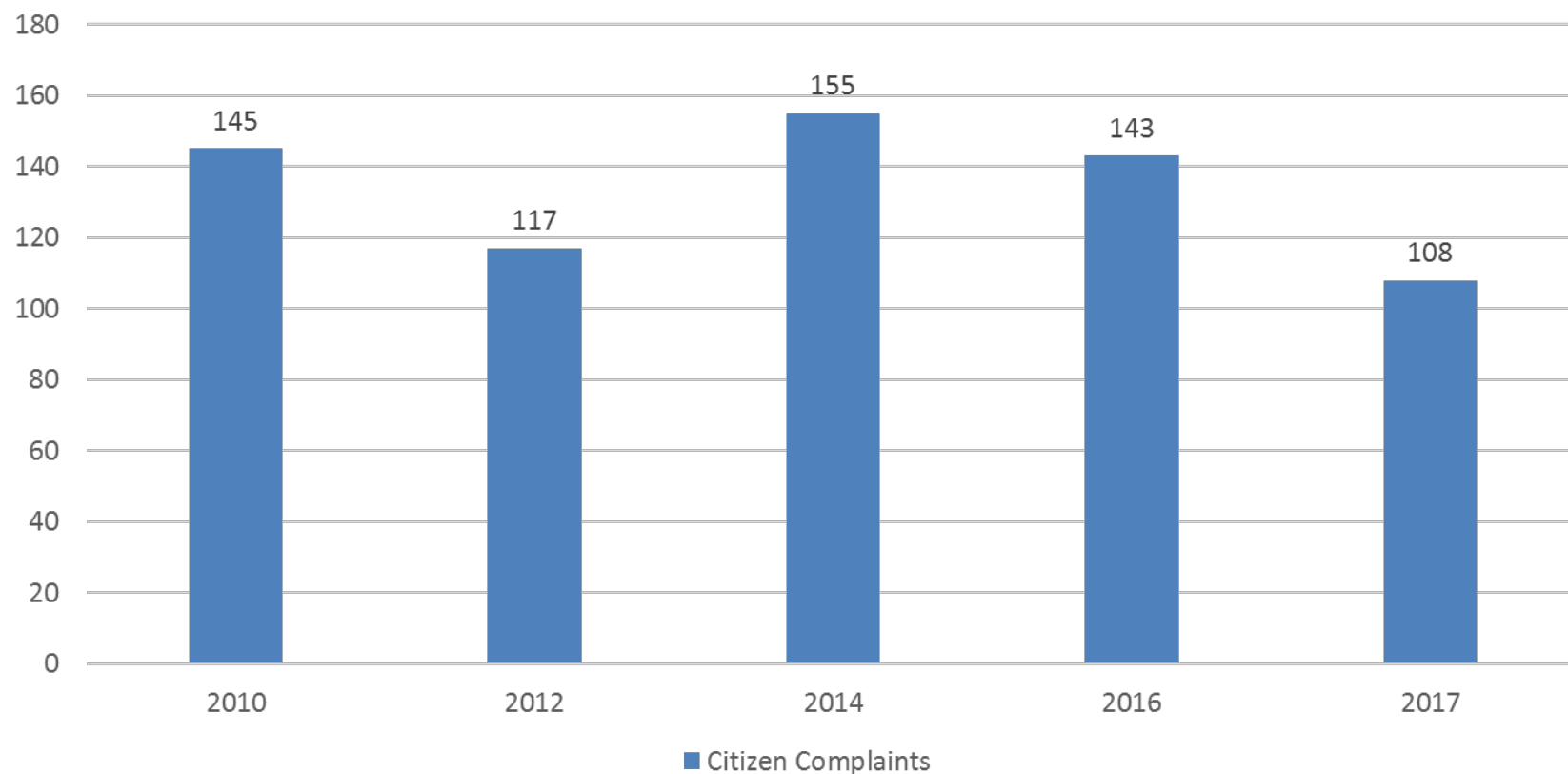
- Staffing Levels
- Consistent Approach
- Tracking Tool
- Training
- Communication
- Enforcement Action Guidance

# What's Happened So Far

- ✓ Annual MS4 meetings
- ✓ Permit Assistance Visits
- ✓ Enforcement Action Tool
- ✓ Training Events – EPA
- ✓ Scope of MS4 Audits

# Measuring Success

Storm Water Citizen Complaints



# Takeaways

- Listen to the Public
- Frequent Visits
- Size Matters
- Empower MS4s
- Enforcement Action Guidance



# Contact Information

Ted Petersen

515-725-0274

[Ted.Petersen@iowa.dnr.gov](mailto:Ted.Petersen@iowa.dnr.gov)