



# Connecticut Department of Energy and Environmental Protection



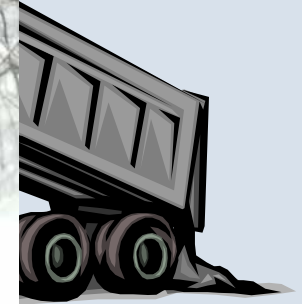
Connecticut Department of  
**ENERGY &  
ENVIRONMENTAL  
PROTECTION**

Post-  
Tren



R

tion:  
ngs



!



February  
Christop  
DEEP St



Connecticut Department of Energy and Environmental Protection

# CT STORMWATER PROGRAM

## Stormwater Issues in Connecticut



**Impervious cover (urban areas)**



**Known for runoff pollution**



**Long Island Sound**



**Impaired Waters**



**Phosphorus/Nitrogen**



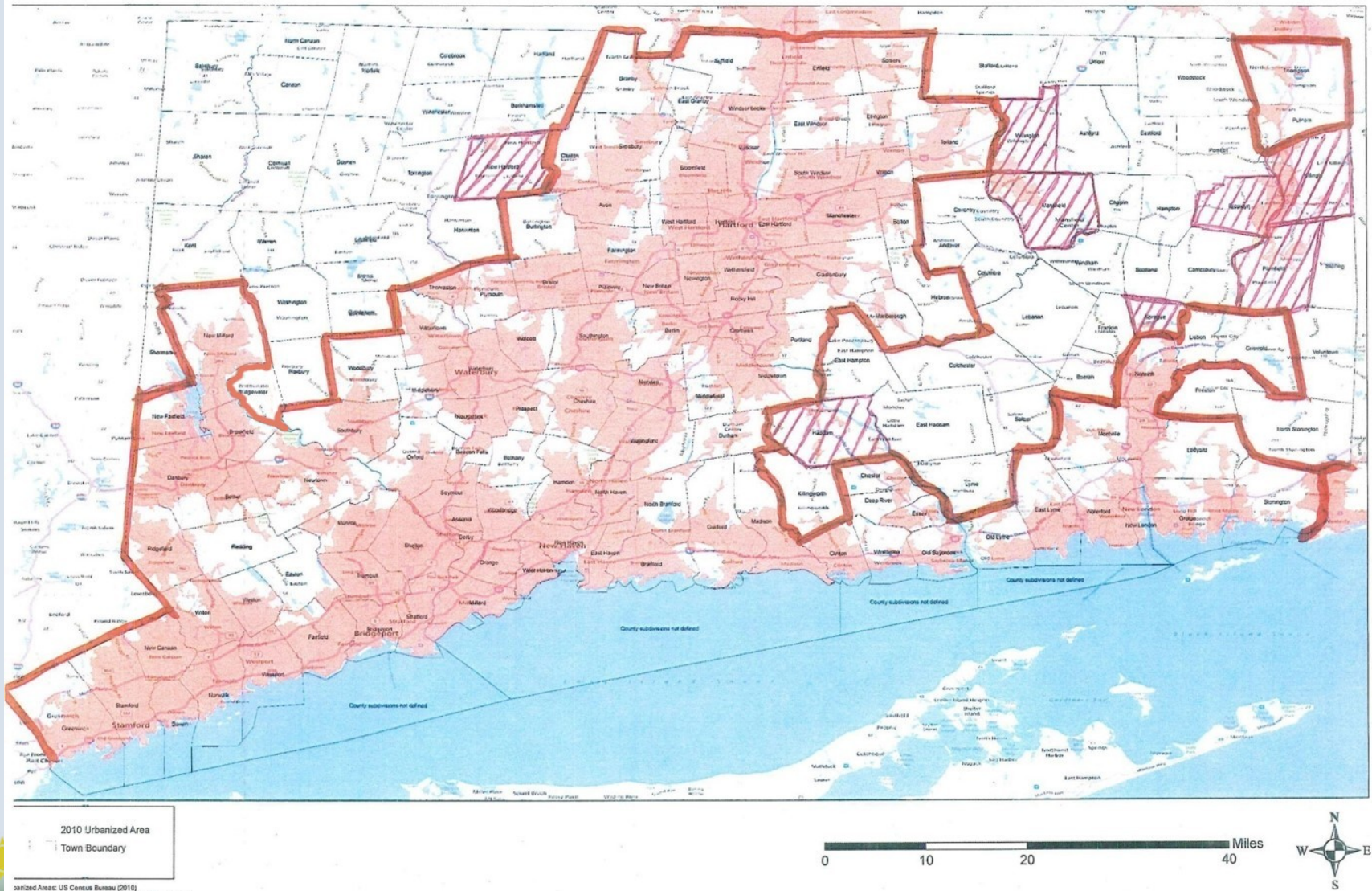
**Bacteria**



Connecticut Department of Energy and Environmental Protection

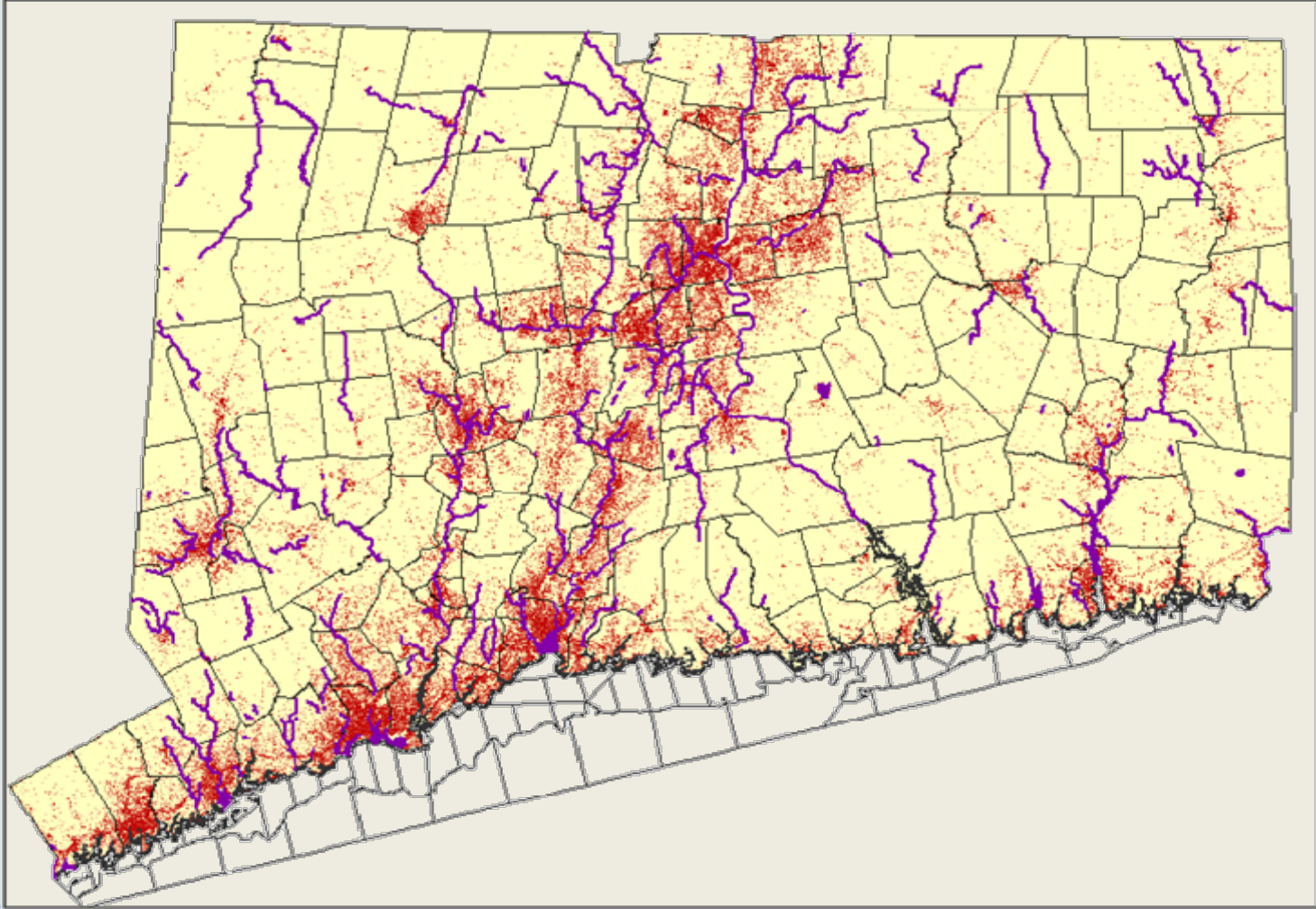


## Connecticut 2010 Urbanized Area



# CT STORMWATER PROGRAM

## IC vs Impairments



Connecticut Department of Energy and Environmental Protection



# CT STORMWATER PROGRAM

## Post-Construction



### CGP & MS4 Permits



### LID/Runoff Reduction

- Adopt 1" retention std
- Remove barriers to LID



### Ensure long-term maintenance

- Basins & treatment devices



### Map DCIA

- DEEP provides base IC maps



# CT STORMWATER PROGRAM

## Supporting the MS4 Permit



**We need help!**



**UConn/CLEAR/NEMO agreement**

- Mapping**
- Outreach**
- Website**
- MS4 stormwater coordinator**



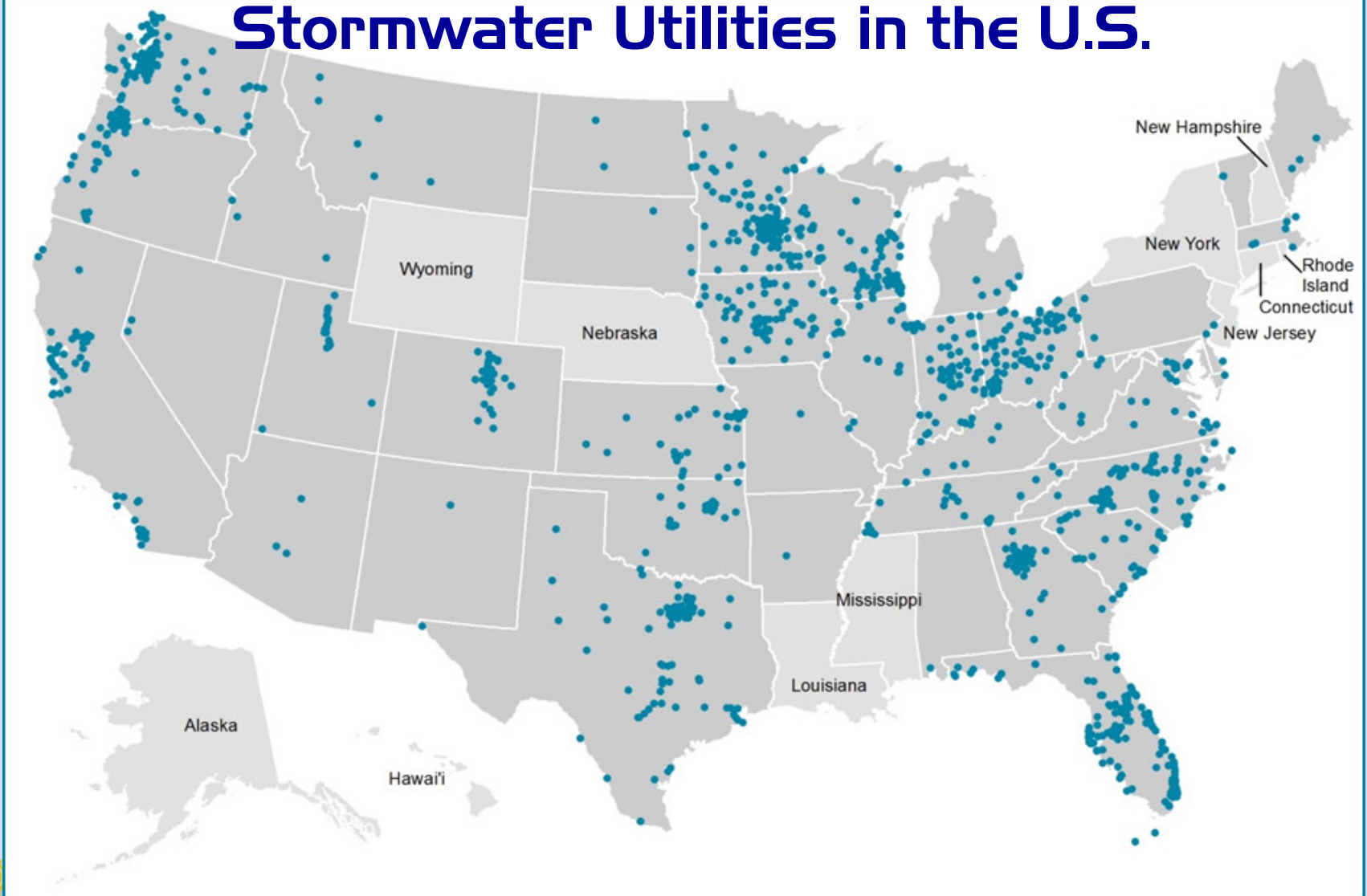
**On-line mapping**



Connecticut Department of Energy and Environmental Protection

# CT STORMWATER PROGRAM

## Stormwater Utilities in the U.S.



Connecticut Department of Energy and Environmental Protection



# **CT STORMWATER PROGRAM**

## **Post-Construction**



**Ideas?**



**Ways to address IC**



**Other retrofit programs**



**Impaired waters**



**TMDLs**



**Other post-const measures?**



Connecticut Department of Energy and Environmental Protection

# DEEP Stormwater Staff

## Discuss ...

Chris Stone (860)424-3850

[chris.stone@ct.gov](mailto:chris.stone@ct.gov)

[www.ct.gov/deep/municipalstormwater](http://www.ct.gov/deep/municipalstormwater)



Connecticut Department of Energy and Environmental Protection